

WAAS CH <b>70416</b> <b>W24A</b>	APP CRS <b>246°</b>	Rwy Idg TDZE Apt Elev	<b>6004</b> <b>486</b> <b>486</b>
--	------------------------	-----------------------------	---

# RNAV (GPS) RWY 24

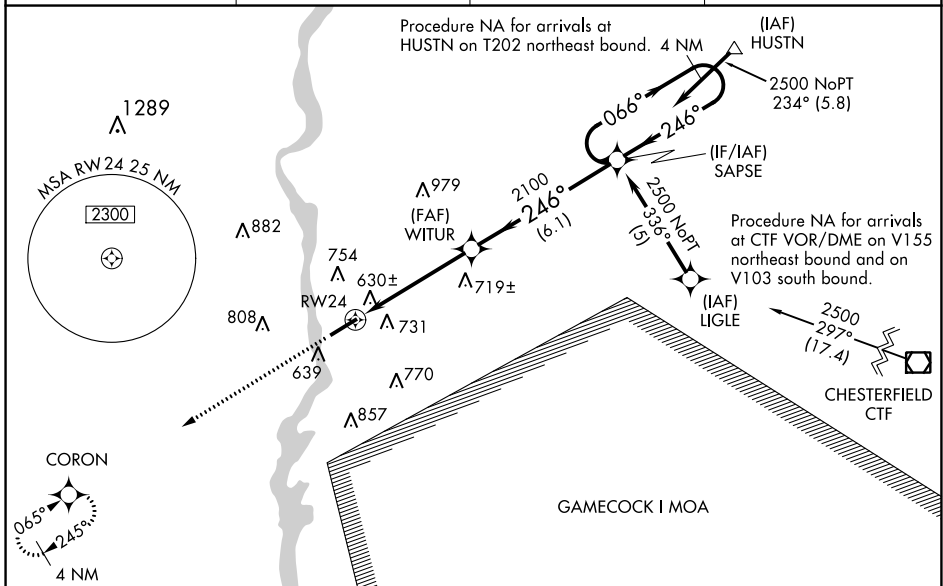
LANCASTER COUNTY-MC WHIRTER FLD (LKR)

**RNP APCH.**

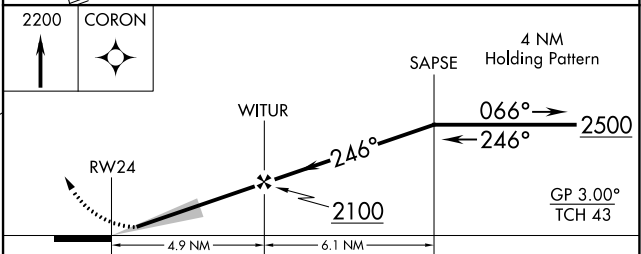
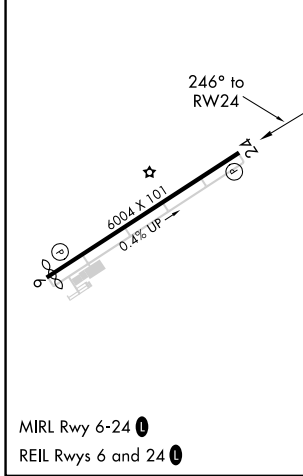
When VGSI inoperative Straight-in/Circling Rwy 24 procedure NA at night. Baro-VNAV NA when using Rock Hill altimeter setting. For uncompensated Baro-VNAV systems, LNAV/VNAV NA below -15°C or above 47°C. When local altimeter setting not received, use Rock Hill altimeter setting and increase LPV DA to 805 feet, LNAV/VNAV DA to 1086 feet, and all MDA 80 feet, increase LNAV Cat C and Circling Cats C and D visibility ¼ SM.

**MISSED APPROACH:**  
Climb to 2200 direct CORON and hold.

AWOS-3 <b>120.825</b>	CHARLOTTE APP CON <b>120.05 307.8</b>	GCO <b>121.725</b>	UNICOM <b>122.725 (CTAF) 0</b>
--------------------------	--	-----------------------	-----------------------------------



ELEV <b>486</b>	TDZE <b>486</b>
-----------------	-----------------



CATEGORY	A	B	C	D
LPV DA		736-1	250 (300-1)	
LNAV/VNAV DA		1017-2	531 (600-2)	
LNAV MDA	960-1	474 (500-1)	960-1½ 474 (500-1½)	960-1½ 474 (500-1½)
CIRCLING	1040-1 554 (600-1)	1060-1 574 (600-1)	1120-1¾ 634 (700-1¾)	1160-2¼ 674 (700-2¼)

SE-2, 26 DEC 2024 to 23 JAN 2025

SE-2, 26 DEC 2024 to 23 JAN 2025