

LOC I-HSA	APP CRS	Rwy Idg	8498
110.35	182°	TDZE	23
		Apt Elev	23

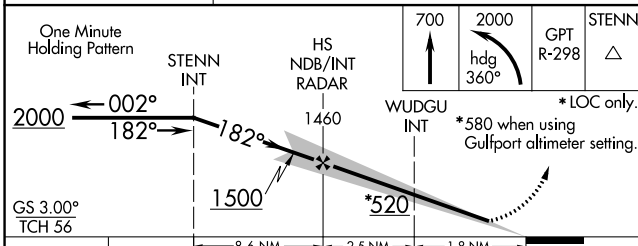
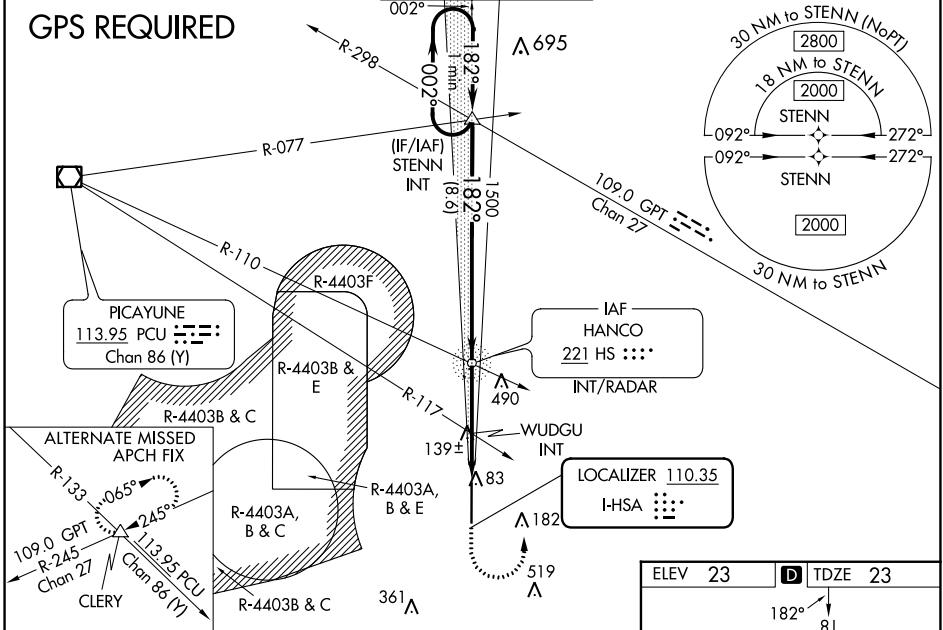
ILS Y or LOC Y RWY 18

STENNIS INTL (HSA)

▲ Circling NA for Cat E west of Rwy 18-36. When local altimeter setting not received, use Gulfport altimeter setting; increase DA to 270 feet; increase all MDA 60 feet and S-LOC 18 Cats C/D/E visibility 1/8 mile. Circling Cat C visibility 1/4 mile and Cats D/E visibility 1/4 mile. WUDGU fix minimums: increase S-LOC 18 Cats C/D/E visibility 1/8 mile, and Circling Cats D/E visibility 1/4 mile. For inop MALS, increase S-ILS 18 Cat E visibility to 1/4 mile, and S-LOC 18 Cats C/D/E visibility to 1 1/8 mile. WUDGU fix minimums: increase S-LOC 18 Cats C/D/E visibility to 1 mile. For inop MALS when using Gulfport altimeter setting, increase S-ILS 18 Cat E visibility to 1/4 mile and S-LOC 18 Cat E visibility to 1 1/8 mile. WUDGU fix minimums: increase S-LOC 18 Cat E visibility to 1 1/4 mile.

MISSED APPROACH:
Climb to 700 then climbing left turn to 2000 on heading 360° and on GPT VORTAC R-298 to STENN and hold.

AWOS-3PT 118.375	GULFPORT APP CON* 124.6 354.1 (130°-309°) 127.5 254.25 (310°-129°)	STENNIS TOWER* 127.15 (CTAF) 229.4	GND CON 121.725 229.4	UNICOM 122.95
----------------------------	--	---	---------------------------------	-------------------------



ELEV 23	TDZE 23														
<table border="1"> <thead> <tr> <th>FAF to MAP 4.3 NM</th> <th>Knots</th> <th>60</th> <th>90</th> <th>120</th> <th>150</th> <th>180</th> </tr> </thead> <tbody> <tr> <td>Min:Sec</td> <td>4:18</td> <td>2:52</td> <td>2:09</td> <td>1:43</td> <td>1:26</td> <td></td> </tr> </tbody> </table>		FAF to MAP 4.3 NM	Knots	60	90	120	150	180	Min:Sec	4:18	2:52	2:09	1:43	1:26	
FAF to MAP 4.3 NM	Knots	60	90	120	150	180									
Min:Sec	4:18	2:52	2:09	1:43	1:26										

CATEGORY	A	B	C	D	E
S-ILS 18	223-1/2 200 (200-1/2)				
S-LOC 18	520-1/2	497 (500-1/2)	520-1 497 (500-1)		
CIRCLING	520-1	497 (500-1)	520-1 1/2	820-2 1/2	820-2 3/4
WUDGU FIX MINIMUMS (DUAL VOR RECEIVERS REQUIRED)					
S-LOC 18	400-1/2	377 (400-1/2)	400-5/8 377 (400-5/8)		
CIRCLING	480-1	457 (500-1)	520-1 1/2	820-2 1/2	820-2 3/4
REIL Rwy 36 1					
HIRL Rwy 18-36 1					

SC-4, 26 DEC 2024 to 23 JAN 2025

SC-4, 26 DEC 2024 to 23 JAN 2025