

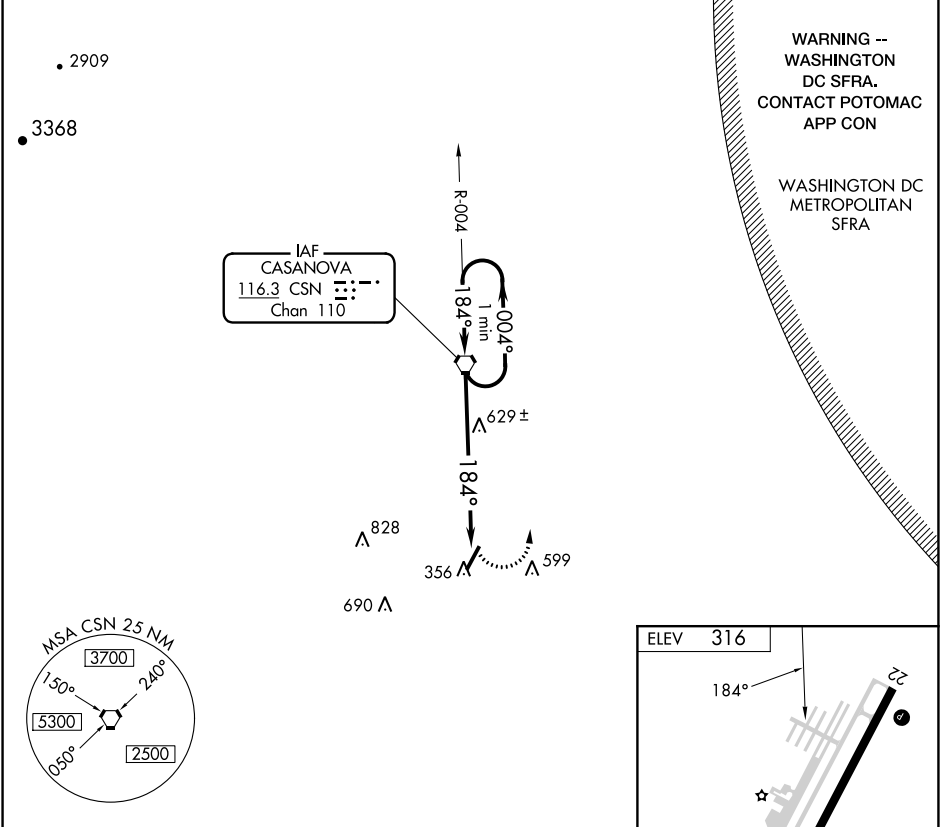
VORTAC CSN 116.3 Chan 110	APP CRS 184°	Rwy Idg TDZE Apt Elev	N/A N/A 316
---	------------------------	-----------------------------	--

VOR-A
CULPEPER RGNL (CJR)

⚠ When VGSI inoperative, procedure NA at night. Visibility reduction by Helicopters NA. When local altimeter setting not received, use Washington Dulles Intl altimeter setting and increase all DAs/MDAs 80 feet, Circling Cats C and D visibility ¼ mile.

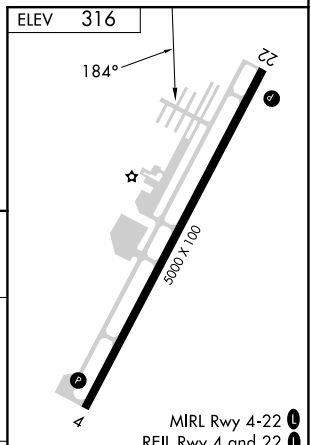
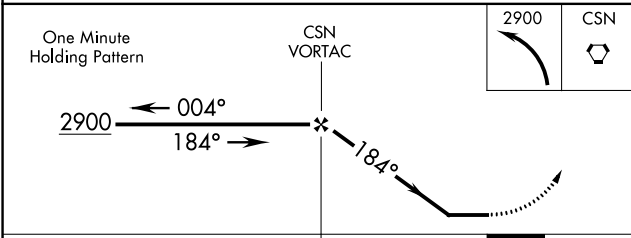
MISSED APPROACH: Climbing left turn to 2900 direct CSN VORTAC and hold.

AWOS-3 119.325	POTOMAC APP CON 128.525 306.925	CLNC DEL 121.6	UNICOM 123.075 (CTAF) ①
--------------------------	---	--------------------------	-----------------------------------



NE-3, 26 DEC 2024 to 23 JAN 2025

NE-3, 26 DEC 2024 to 23 JAN 2025



CATEGORY	FAF to MAP 6.6 NM					
	A	B	C	D		
CIRCLING	920-1 604 (700-1)	960-1 644 (700-1)	960-1¾ 644 (700-1¾)	1100-2½ 784 (800-2½)		
	Knots	60	90	120	150	180
	Min:Sec	6:36	4:24	3:18	2:38	2:12