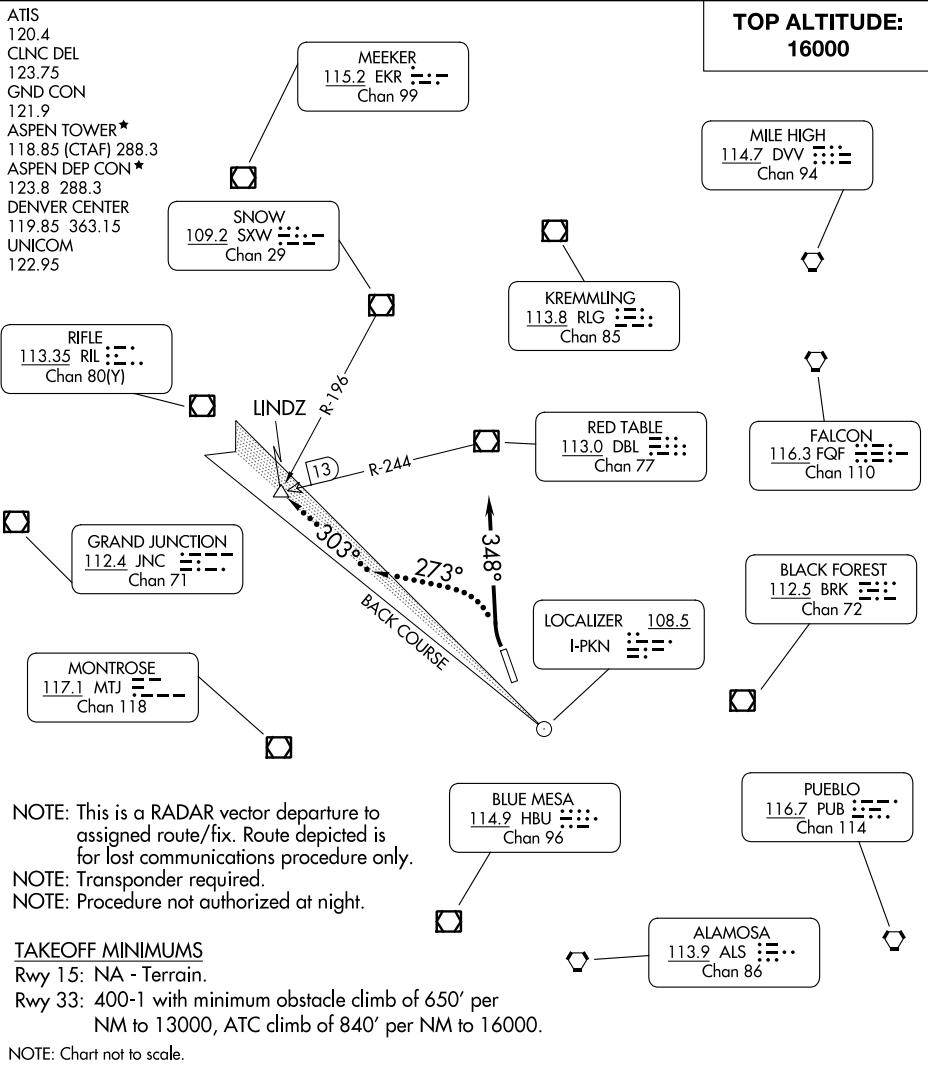


ASPEN SEVEN DEPARTURE

AL-5889 (FAA)

ASPEN-PITKIN COUNTY/SARDY FLD (A5E)
ASPEN, COLORADO



SW-1, 26 DEC 2024 to 23 JAN 2025

SW-1, 26 DEC 2024 to 23 JAN 2025

NOTE: This is a RADAR vector departure to assigned route/fix. Route depicted is for lost communications procedure only.
 NOTE: Transponder required.
 NOTE: Procedure not authorized at night.

TAKEOFF MINIMUMS

Rwy 15: NA - Terrain.
 Rwy 33: 400-1 with minimum obstacle climb of 650' per NM to 13000, ATC climb of 840' per NM to 16000.

NOTE: Chart not to scale.

DEPARTURE ROUTE DESCRIPTION

TAKEOFF RUNWAY 33: Climbing right turn heading 348°, maintain 16000 or assigned altitude for RADAR vectors to assigned route/fix. Expect clearance to filed altitude 10 minutes after departure.

LOST COMMUNICATIONS: If no transmissions are received for one minute after departure, turn left heading 273° to intercept and proceed via the I-PKN NW course (outbound) to LINDZ INT/DBL R-244/13 DME, thence via assigned fix/route.

NOTE: I-PKN back course outbound is normal sensing.

ASPEN SEVEN DEPARTURE