

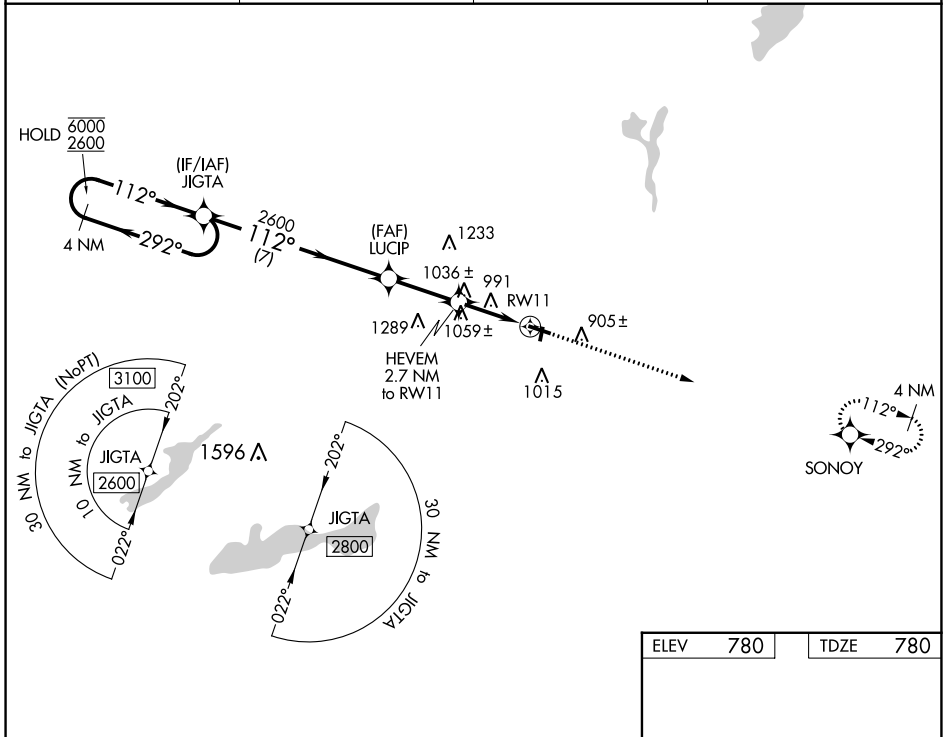
WAAS CH <b>90134</b> <b>W11A</b>	APP CRS <b>112°</b>	Rwy Idg TDZE Apt Elev	<b>4300</b> <b>780</b> <b>780</b>
--	------------------------	-----------------------------	---

# RNAV (GPS) RWY 11

BURLINGTON MUNI (BUU)

RNP APCH - GPS.	MISSED APPROACH: Climb to 2500 direct SONOY and hold.
<p>▼ Circling NA to Rws 1 and 19.</p> <p>▲ Rwy 11 helicopter visibility reduction below ¾ SM NA.</p>	

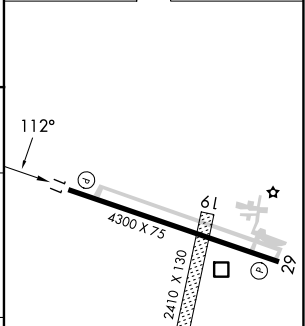
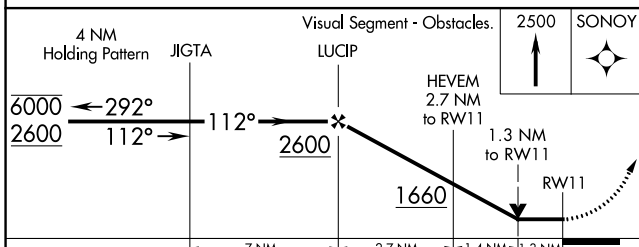
AWOS-3 <b>125.275</b>	MILWAUKEE APP CON <b>135.875 307.0</b>	GCO <b>121.725</b>	UNICOM <b>123.05</b> (CTAF) <b>1</b>
--------------------------	---	-----------------------	---



EC-3, 26 DEC 2024 to 23 JAN 2025

EC-3, 26 DEC 2024 to 23 JAN 2025

ELEV 780	TDZE 780
----------	----------



CATEGORY	A	B	C	D
LP MDA	1300-1	520 (600-1)	1300-1 <sup>3</sup> / <sub>8</sub>	520 (600-1 <sup>3</sup> / <sub>8</sub> )
LNAV MDA	1320-1	540 (600-1)	1320-1 <sup>1</sup> / <sub>2</sub>	540 (600-1 <sup>1</sup> / <sub>2</sub> )
<b>C</b> CIRCLING	1320-1 540 (600-1)	1380-1 600 (600-1)	1380-1 <sup>1</sup> / <sub>2</sub> 600 (600-1 <sup>1</sup> / <sub>2</sub> )	1560-2 <sup>1</sup> / <sub>2</sub> 780 (800-2 <sup>1</sup> / <sub>2</sub> )

MIRL Rwy 11-29 **1**  
REIL Rws 11 and 29 **1**