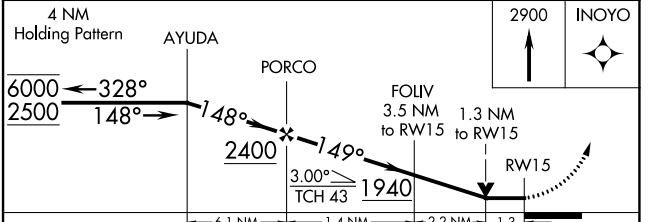
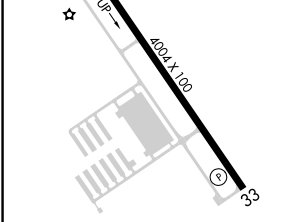
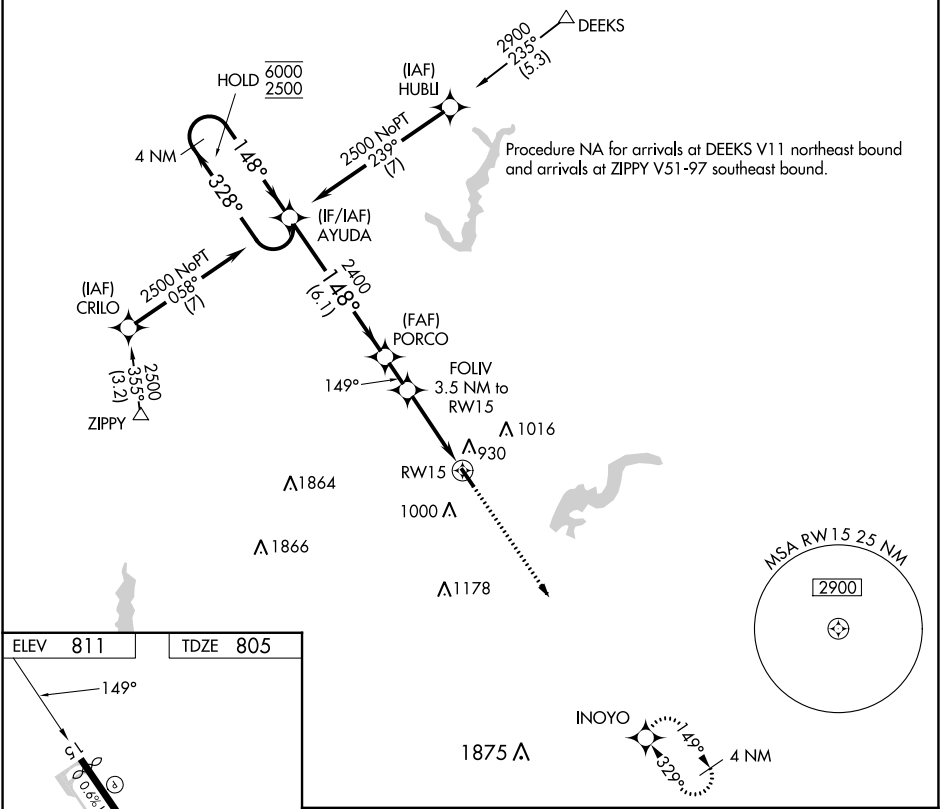


APP CRS	Rwy Idg	<b>3848</b>
<b>149°</b>	TDZE	<b>805</b>
	Apt Elev	<b>811</b>

# RNAV (GPS) RWY 15

INDIANAPOLIS METRO (UMP)

RNP APCH - GPS.		MISSED APPROACH: Climb to 2900 direct INOYO and hold.	
AWOS-3PT <b>119.375</b>	INDIANAPOLIS APP CON <b>127.15 317.8</b>	CLNC DEL <b>121.625</b>	UNICOM <b>123.0 (CTAF) 0</b>



CATEGORY	A	B	C	D
LNAV MDA	1240-1	435 (500-1)	1240-1¼ 435 (500-1¼)	NA
<b>C</b> CIRCLING	1320-1 509 (600-1)	1340-1 529 (600-1)	1340-1½ 529 (600-1½)	NA

MIRL Rwy 15-33 0  
REIL Rwy 15 and 33 0

EC-2, 26 DEC 2024 to 23 JAN 2025

EC-2, 26 DEC 2024 to 23 JAN 2025