

|                        |                        |
|------------------------|------------------------|
| APP CRS<br><b>329°</b> | Rwy Idg<br><b>4004</b> |
|                        | TDZE<br><b>811</b>     |
|                        | Apt Elev<br><b>811</b> |

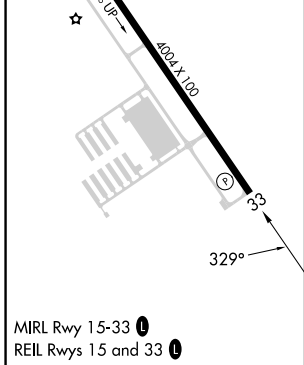
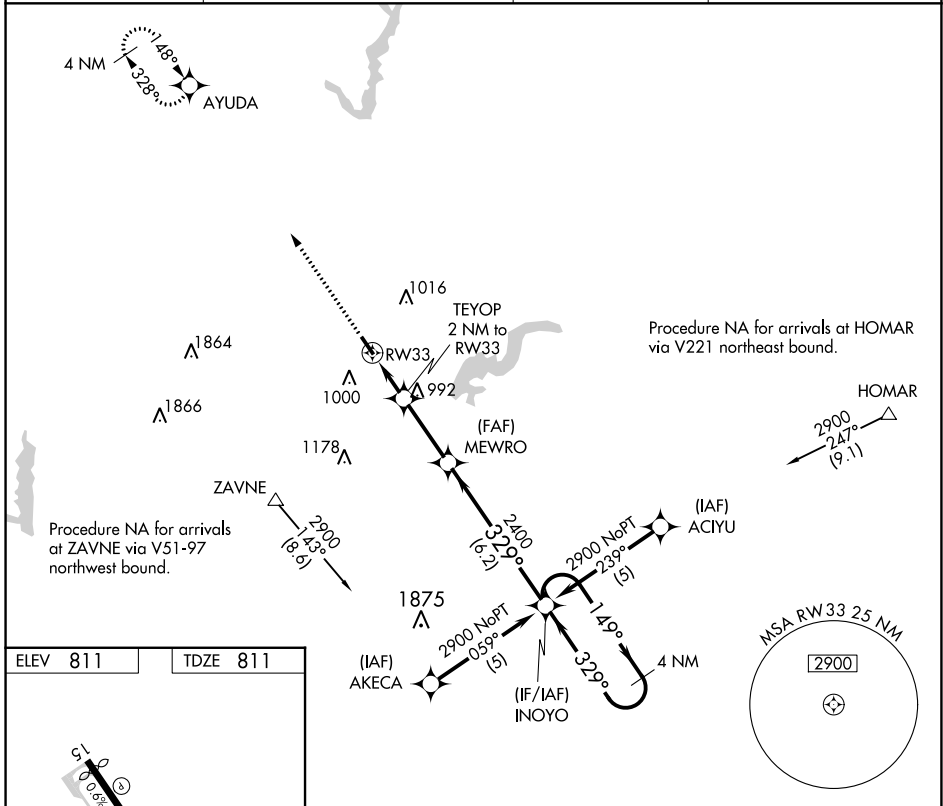
# RNAV (GPS) RWY 33

INDIANAPOLIS METRO (UMP)

**▽** DME/DME RNP-0.3 NA. When local altimeter setting not received, use Indianapolis Intl altimeter setting and increase all MDA 60 feet and LNAV Cat C visibility ¼ mile. VDP NA when using Indianapolis Intl altimeter setting. Rwy 33 helicopter visibility reduction below ¾ SM NA.

**△ NA** MISSED APPROACH: Climb to 2500 direct AYUDA and hold.

|                            |   |                            |                                 |
|----------------------------|---|----------------------------|---------------------------------|
| AWOS-3PT<br><b>119.375</b> | INDIANAPOLIS APP CON<br><b>127.15 317.8</b> | CLNC DEL<br><b>121.625</b> | UNICOM<br><b>123.0 (CTAF) 0</b> |
|----------------------------|---|----------------------------|---------------------------------|



|                   |                       |  |                         |                      |        |
|-------------------|-----------------------|--|-------------------------|----------------------|--------|
| 2500              | AYUDA                 | VGSi and descent angles not coincident (VGSi Angle 3.50/TCH 27). |                         | 4 NM Holding Pattern |        |
|                   |                       | TEYOP<br>2 NM to RWY 33  | MEWRO                   | INOYO                |        |
|                   |                       | 1.1 NM to RWY 33   | 1480                    | 2400                 |        |
|                   |                       | ≤3.04° TCH 40  | 149°                    | 329°                 |        |
|                   |                       | -1.1   | 0.9 NM                  | 2.8 NM               | 6.2 NM |
| CATEGORY          | A                     | B  | C                       | D                    |        |
| LNAV MDA          | 1260-1                | 449 (500-1)  | 1260-1¼<br>449 (500-1¼) | NA                   |        |
| <b>C</b> CIRCLING | 1320-1<br>509 (600-1) | 1340-1<br>529 (600-1)  | 1340-1½<br>529 (600-1½) | NA                   |        |

EC-2, 26 DEC 2024 to 23 JAN 2025

EC-2, 26 DEC 2024 to 23 JAN 2025