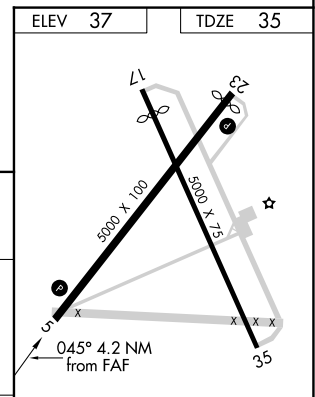
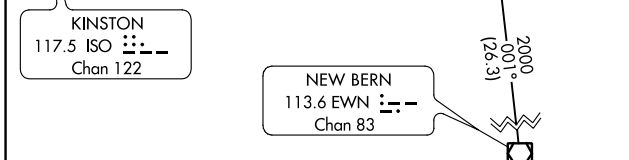
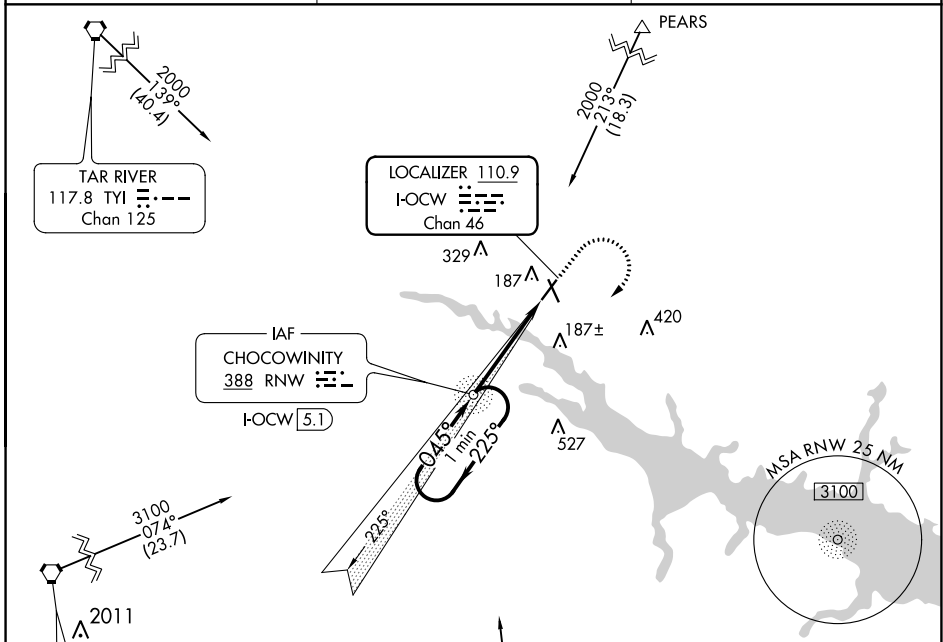


LOC/DME I-OCW 110.9 Chan 46	APP CRS 045°	Rwy Idg TDZE Apt Elev	5000 35 37
---	------------------------	-----------------------------	---------------------------------------

LOC RWY 5

WASHINGTON-WARREN (OCW)

ADF required.		MISSED APPROACH: Climb to 1000, then climbing right turn to 1600 direct RNW NDB and hold.
AWOS-3 120.175	CHERRY POINT APP CON 119.35 377.175	UNICOM 122.7 (CTAF) 0



VGSIs and descent angles not coincident (VGSIs Angle 3.00/TCH 46).		1000	1600	RNW
One Minute Holding Pattern	RNW NDB I-OCW 5.1			
1600	← 225°	→ 045°	045°	I-OCW 2.1
			3.41° TCH 46	I-OCW 0.9
			2.9 NM	1.3

CATEGORY	A	B	C	D
S-5	480-1	445 (500-1)	480-1 $\frac{3}{8}$	445 (500-1 $\frac{3}{8}$)
CIRCLING	540-1	503 (600-1)	640-1 $\frac{3}{4}$ 603 (700-1 $\frac{3}{4}$)	780-2 $\frac{1}{2}$ 743 (800-2 $\frac{1}{2}$)

ELEV 37	TDZE 35
REIL Rwy 5 and 23 0	
MIRL Rwys 5-23 0	
FAF to MAP 4.2 NM	
Knots	60 90 120 150 180
Min:Sec	4:12 2:48 2:06 1:41 1:24

SE-2, 26 DEC 2024 to 23 JAN 2025

SE-2, 26 DEC 2024 to 23 JAN 2025