

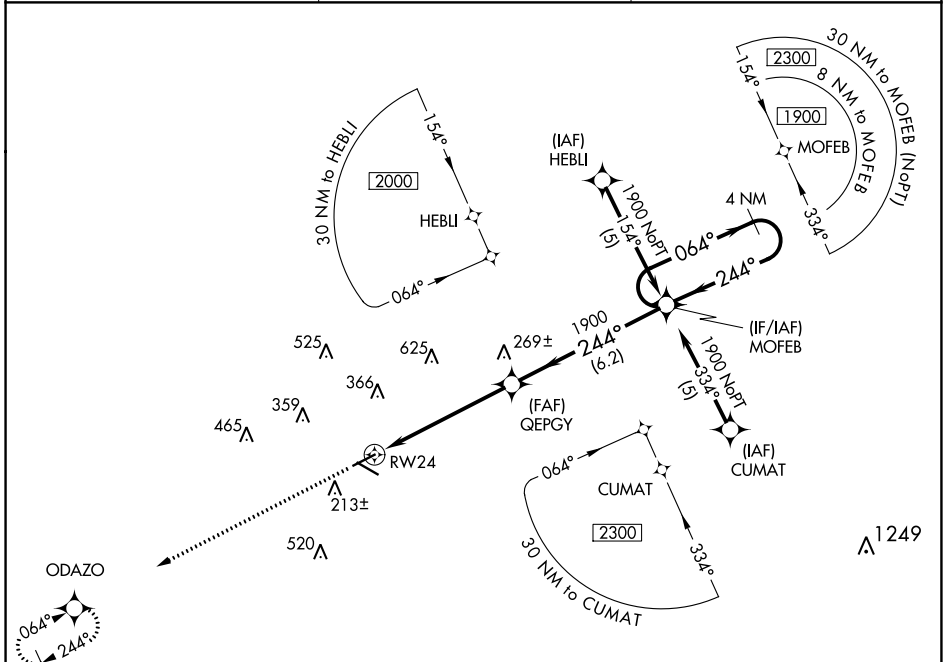
APP CRS	Rwy Idg	5136
244°	TDZE	83
	Apt Elev	99

RNAV (GPS) RWY 24

BREWTON MUNI (12J)

RNP APCH - GPS.		MISSED APPROACH: Climb to 2000 direct ODAZO and hold.
<p>▽ When local altimeter setting not received use Pensacola altimeter setting and increase all MDA 100 feet; increase LNAV Cats C and D visibility ¼ SM. Procedure NA at night.</p> <p>△ NA</p>		

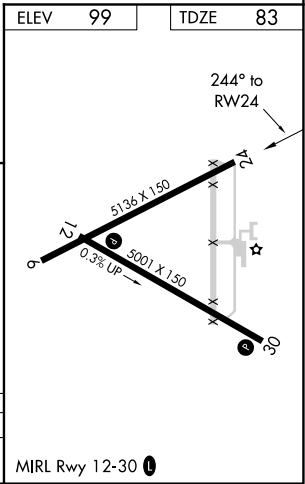
AWOS-3PT 119.325	PENSACOLA APP CON 127.35 291.625	UNICOM 122.725 (CTAF) 0
----------------------------	--------------------------------------------	-----------------------------------



SE-4, 26 DEC 2024 to 23 JAN 2025

SE-4, 26 DEC 2024 to 23 JAN 2025

ELEV	99	TDZE	83
------	----	------	----



2000	ODAZO	Visual Segment - Obstacles.		4 NM Holding Pattern
↑	✧	QEGPY	MOFEB	
RWY 24		← 244° →	← 064° →	1900
5.5 NM		6.2 NM		

CATEGORY	A	B	C	D
LNAV MDA	520-1	437 (500-1)	520-1¼	437 (500-1¼)

MIRL Rwy 12-30 0