

APP CRS	Rwy Idg	5136
064°	TDZE	83
	Apt Elev	99

RNAV (GPS) RWY 6

BREWTON MUNI (12J)

RNP APCH.

▽ When local altimeter setting not received, use Pensacola altimeter setting and increase all MDA 100 feet; increase LNAV Cats C and D visibility $\frac{1}{4}$ SM. Procedure NA at night.
▲ NA

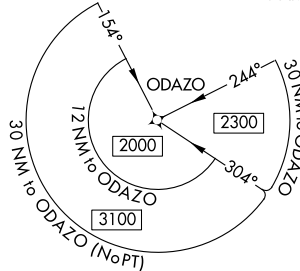
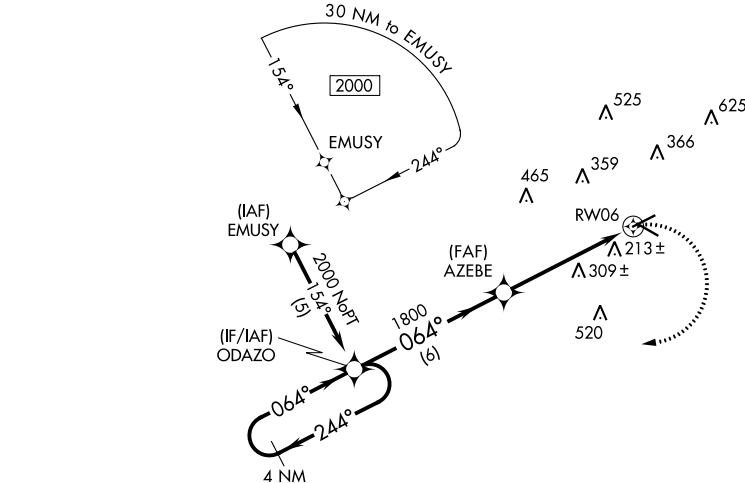
MISSED APPROACH: Climbing right turn to 2000 direct ODAZO and hold.

AWOS-3PT
119.325

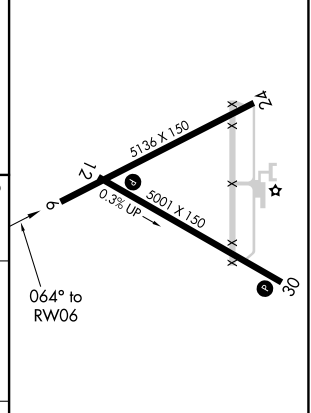
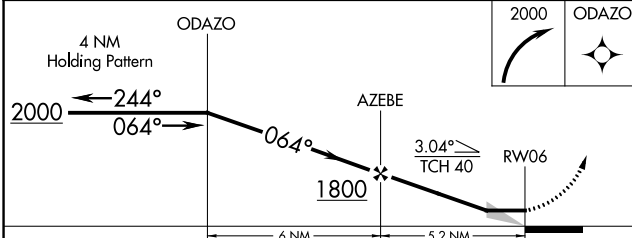
PENSACOLA APP CON
127.35 291.625

UNICOM
122.725 (CTAF) 0

▲ 775



ELEV	99	TDZE	83
------	----	------	----



CATEGORY	A	B	C	D
LNAV MDA	560-1	477 (500-1)	560-1 $\frac{3}{8}$	477 (500-1 $\frac{3}{8}$)

MIRL Rwy 12-30 0

SE-4, 26 DEC 2024 to 23 JAN 2025

SE-4, 26 DEC 2024 to 23 JAN 2025