

VORTAC CEW <b>115.9</b> Chan <b>106</b>	APP CRS <b>300°</b>	Rwy Idg TDZE Apt Elev	<b>5001</b> <b>99</b> <b>99</b>
---	------------------------	-----------------------------	---------------------------------------

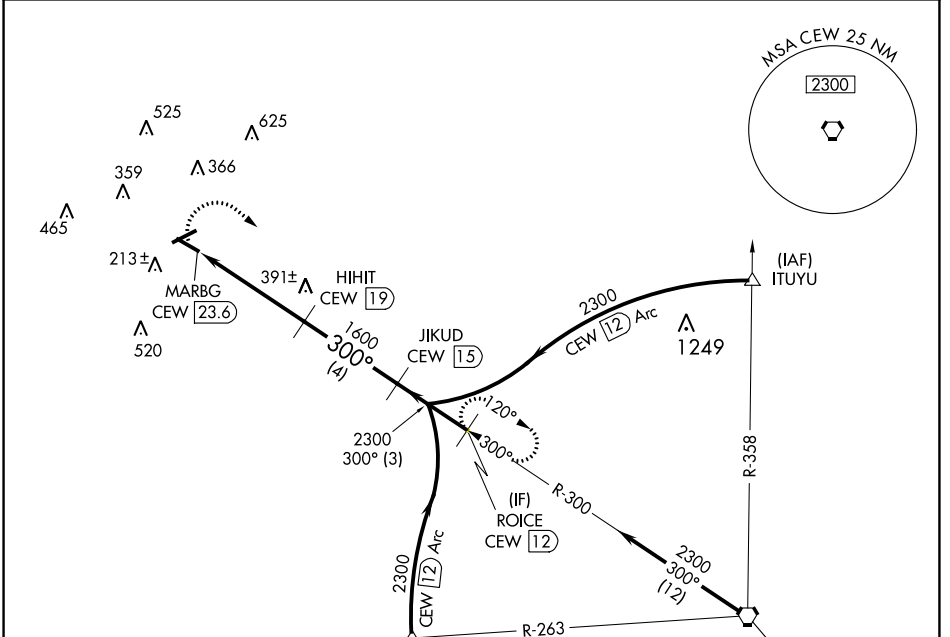
# VOR/DME RWY 30

BREWTON MUNI (12J)

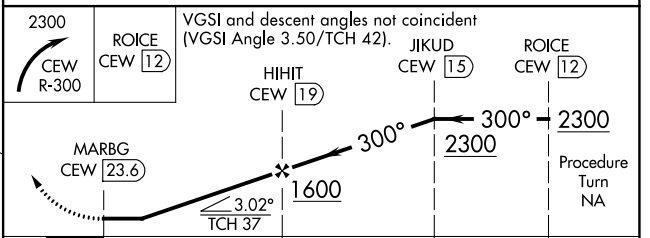
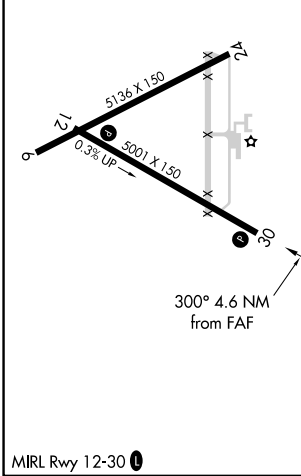
**▼** Visibility reduction by helicopters NA. When local altimeter setting not received use Pensacola altimeter setting; increase all MDA 100 feet, increase S-30 and Circling Cat C visibility ¼ SM and Circling Cat D visibility ½ SM.

**▲ NA** MISSED APPROACH: Climbing right turn to 2300 via CEW VORTAC R-300 to ROICE/CEW 12 DME and hold.

AWOS-3PT <b>119.325</b>	PENSACOLA APP CON <b>127.35 291.625</b>	UNICOM <b>122.725 (CTAF) 0</b>
----------------------------	--	-----------------------------------



ELEV 99	TDZE 99
---------	---------



CATEGORY	A	B	C	D
S-30	660-1 561 (600-1)	660-1¼ 561 (600-1¼)	660-1½ 561 (600-1½)	660-1¾ 561 (600-1¾)
CIRCLING	660-1 561 (600-1)	680-1¼ 581 (600-1¼)	700-1¾ 601 (700-1¾)	880-2½ 781 (800-2½)

SE-4, 26 DEC 2024 to 23 JAN 2025

SE-4, 26 DEC 2024 to 23 JAN 2025