

|  |                        |   |
|--|------------------------|---|
| WAAS<br>CH <b>82723</b><br><b>W18A</b> | APP CRS<br><b>183°</b> | Rwy Idg <b>5008</b><br>TDZE <b>930</b><br>Apt Elev <b>930</b> |
|--|------------------------|---|

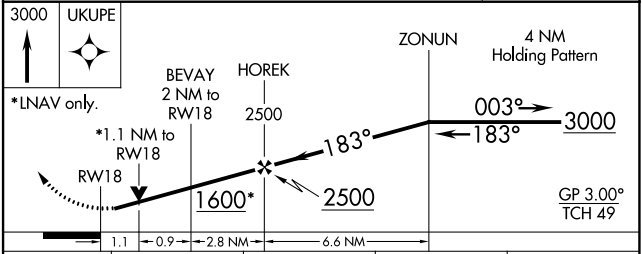
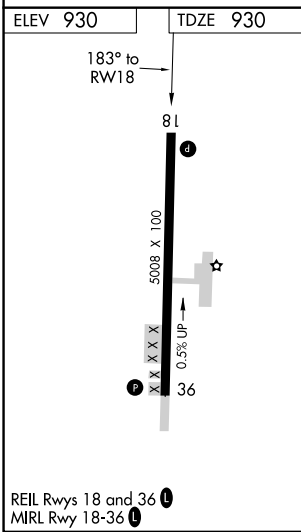
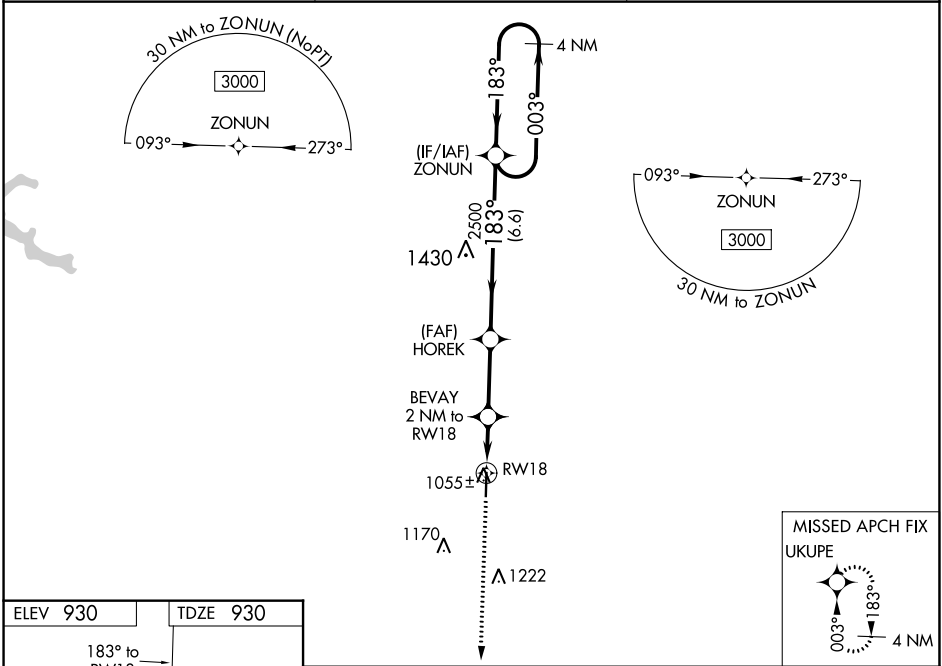
# RNAV (GPS) RWY 18

POSEY FLD (1M4)

**⚠** Circling Rwy 36 NA at night. Rwy 18 helicopter visibility reduction below  $\frac{3}{4}$  SM NA. When local altimeter setting not received, use Muscle Shoals altimeter setting; Increase LPV DA to 1298 feet, and LNAV/VNAV DA to 1354 feet and LNAV/VNAV visibility  $\frac{1}{4}$  SM; increase all MDAs 120 feet and visibility LNAV Cats C and D  $\frac{1}{4}$  SM; increase Circling Cat C visibility  $\frac{1}{2}$  SM and Cat D  $\frac{1}{4}$  SM. Baro-VNAV NA when using Muscle Shoals altimeter setting. For uncompensated Baro-VNAV systems, LNAV/VNAV NA below -16°C (4°F) or above 54°C (130°F). DME/DME RNP-0.3 NA. VDP NA with Muscle Shoals altimeter setting.

**MISSED APPROACH:**  
Climb to 3000 direct UKUPE and hold.

|                            |                                      |                                 |
|----------------------------|--------------------------------------|---------------------------------|
| AWOS-3PT<br><b>119.525</b> | MEMPHIS CENTER<br><b>120.8 307.0</b> | UNICOM<br><b>122.8 (CTAF) 0</b> |
|----------------------------|--------------------------------------|---------------------------------|



| CATEGORY      | A                     | B                     | C                       | D                     |
|---------------|-----------------------|-----------------------|-------------------------|-----------------------|
| LPV DA        |                       | 1180-1                | 250 (300-1)             |                       |
| LNAV/ VNAV DA |                       | 1236-1                | 306 (400-1)             |                       |
| LNAV MDA      | 1320-1                | 390 (400-1)           | 1320-1½                 | 390 (400-1½)          |
| CIRCLING      | 1380-1<br>450 (500-1) | 1400-1<br>470 (500-1) | 1520-1½<br>590 (600-1½) | 1540-2<br>610 (700-2) |

SE-4, 26 DEC 2024 to 23 JAN 2025

SE-4, 26 DEC 2024 to 23 JAN 2025