

WAAS CH 49026 W02A	APP CRS 017°	Rwy Idg TDZE Apt Elev	6020 182 194
--	------------------------	-----------------------------	---

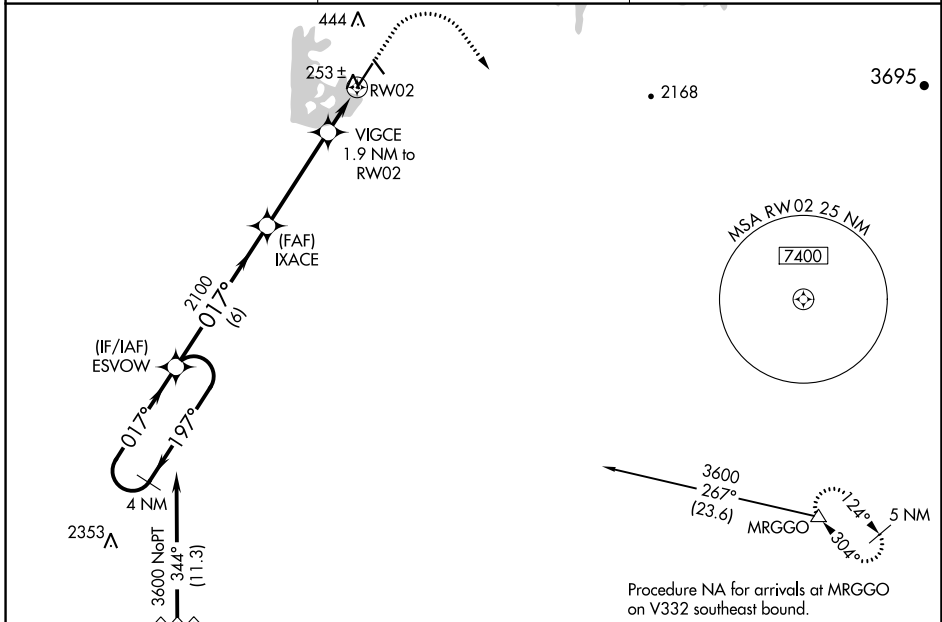
RNAV (GPS) RWY 2

OROVILLE MUNI (OVE)

▽ For uncompensated Baro-VNAV systems, LNAV/VNAV NA below -2°C (29°F) or above 54°C (130°F). Circling NA northeast of Rwy 13-31. DME/DME RNP-0.3 NA.

MISSED APPROACH: Climb to 650 then climbing right turn to 6000 direct MRGGO and hold, continue climb-in-hold to 6000.

ASOS 121.425	NORCAL APP CON 125.4 259.1	UNICOM 122.8 (CTAF)
------------------------	--------------------------------------	-------------------------------



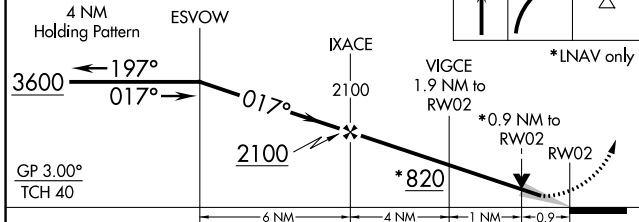
SW-2, 26 DEC 2024 to 23 JAN 2025

SW-2, 26 DEC 2024 to 23 JAN 2025

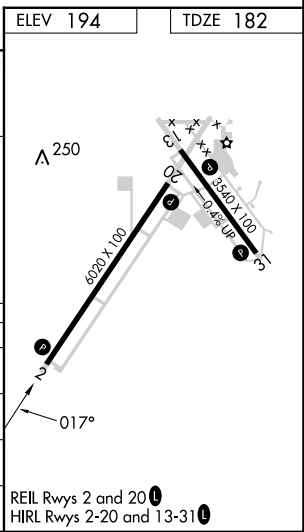
Procedure NA for arrivals at YUBBA on V23 southbound.

Procedure NA for arrivals at MRGGO on V332 southeast bound.

VGSI and RNAV glidepath angles not coincident (VGSI Angle 3.00/TCH 44).



CATEGORY	A	B	C	D
LPV DA		432-7/8	250 (300-7/8)	
LNAV/VNAV DA		432-7/8	250 (300-7/8)	
LNAV MDA		520-1	338 (400-1)	
C CIRCLING	580-1 386 (400-1)	660-1 466 (500-1)	660-1½ 466 (500-1½)	780-2 586 (600-2)



REIL Rwys 2 and 20
HIRL Rwys 2-20 and 13-31