

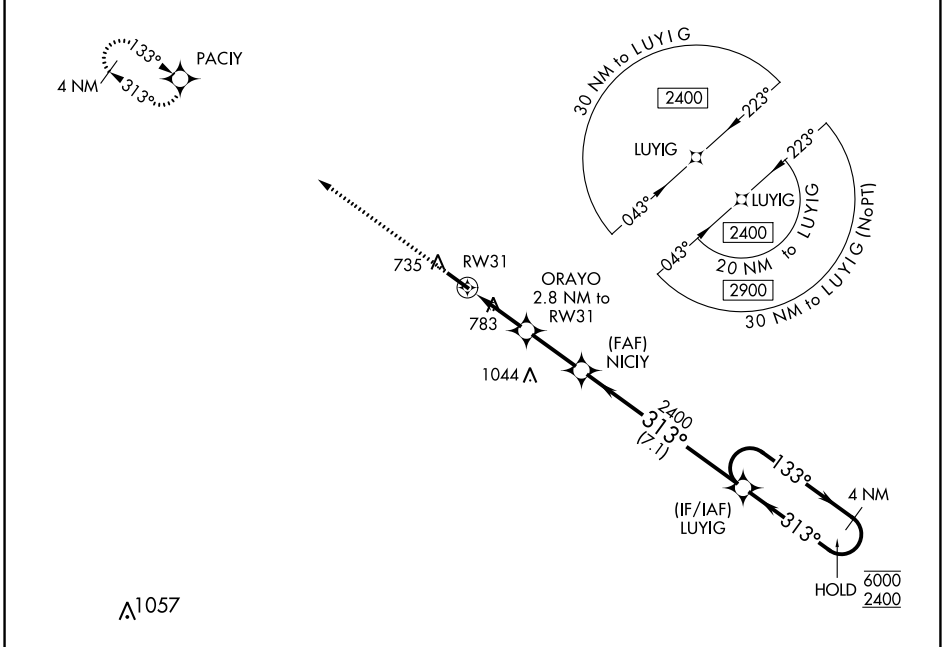
WAAS CH 45609 W31A	APP CRS 313°	Rwy Idg 4020 TDZE 640 Apt Elev 646
--	------------------------	---

RNAV (GPS) RWY 31

WASHINGTON/WILKES COUNTY (IIY)

RNP APCH - GPS.	<p>▼ Rwy 31 helicopter visibility reduction below 3/4 SM NA. ▲ For uncompensated Baro-VNAV systems, LNAV/VNAV NA below -16°C or above 54°C.</p>	<p>MISSILE APPROACH: Climb to 2400 direct PACIY and hold.</p>
-----------------	---	---

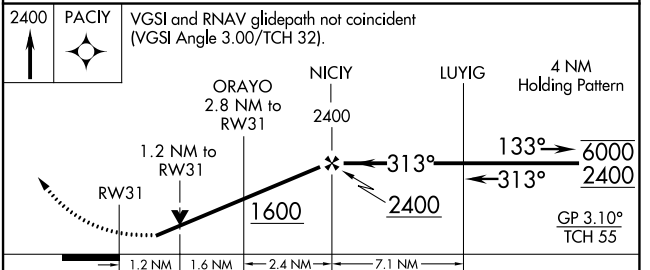
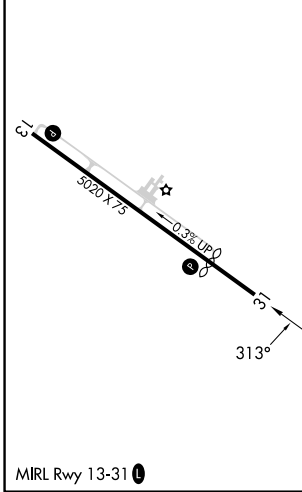
AWOS-3 118.375	AUGUSTA APP CON* 126.8 270.3	UNICOM 122.7 (CTAF) 0
--------------------------	--	---------------------------------



SE-4, 26 DEC 2024 to 23 JAN 2025

SE-4, 26 DEC 2024 to 23 JAN 2025

ELEV 646	TDZE 640
-----------------	-----------------



CATEGORY	A	B	C	D
LPV DA	891-7/8		251 (300-7/8)	
LNAV/VNAV DA	910-7/8		270 (300-7/8)	
LNAV MDA	1040-1	400 (400-1)	1040-1 1/8	400 (400-1 1/8)
CIRCLING	1080-1	1100-1	1100-1 1/2	434 (500-1)
	434 (500-1)	454 (500-1)	454 (500-1 1/2)	NA