

WAAS CH 86444 W06A	APP CRS 059°	Rwy Idg TDZE Apt Elev	5001 819 819
--	------------------------	-----------------------------	---

RNAV (GPS) RWY 6

MIFFLIN COUNTY (R.V.L.)

RNP APCH - GPS.

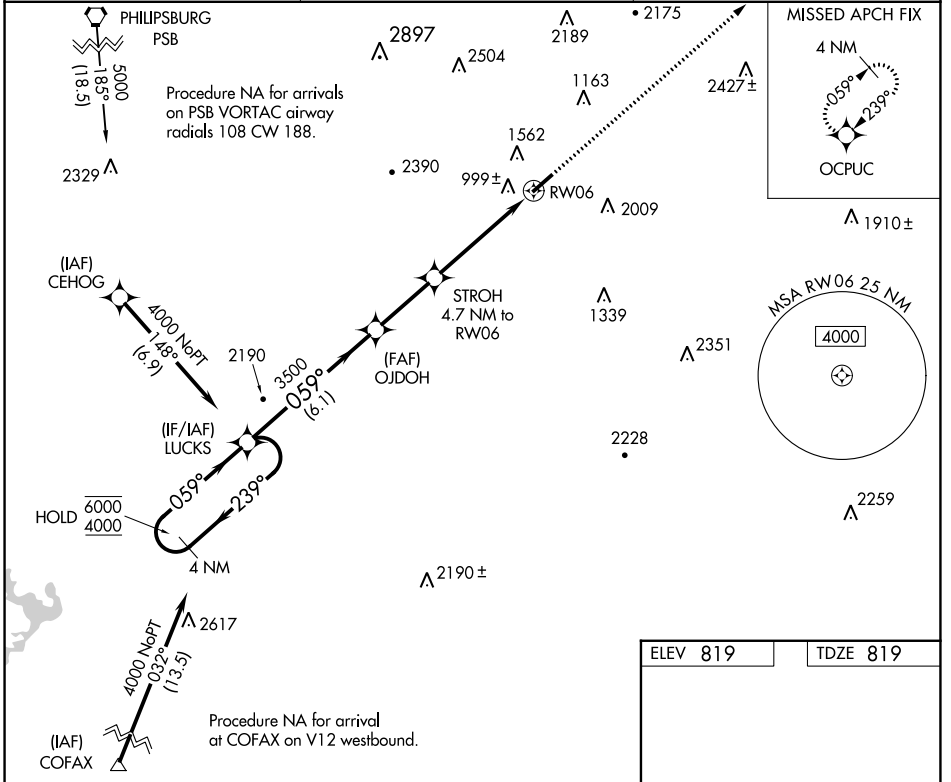
MISSED APPROACH:
Climb to 4000 direct
OCPUC and hold.

Rwy 6 helicopter visibility reduction below 3/4 SM NA. Baro-VNAV NA.

AWOS-3PT
123.85

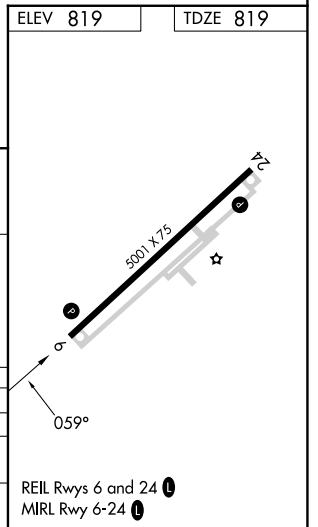
NEW YORK CENTER
134.8 338.3

UNICOM
122.7 (CTAF)



NE-4, 26 DEC 2024 to 23 JAN 2025

NE-4, 26 DEC 2024 to 23 JAN 2025



4 NM Holding Pattern	VGSi and RNAV glidepath not coincident (VGSi Angle 4.00/TCH 48).				4000	OCPUC
6000 ← 239°	LUCKS	OJDOH	STROH	RWY 6		
4000 → 059°		3500	4.7 NM to RWY 6	1.7 NM to RWY 6		
GP 3.30° TCH 48		3500	2520			
	6.1 NM	2.8 NM	3.1 NM	1.7 NM		
CATEGORY	A	B	C	D		
LPV DA		1314-1 3/8	495 (500-1 3/8)			
LNNAV/DA VNAV		1506-2	687 (700-2)			
LNNAV MDA	1580-1 761 (800-1)	1580-1 1/4 761 (800-1 1/4)	1580-2 1/2	761 (800-2 1/2)		