

VOR EAR 111.2	APP CRS 217°	Rwy Idg TDZE Apt Elev	N/A N/A 2313
-------------------------	------------------------	-----------------------------	---

VOR-A

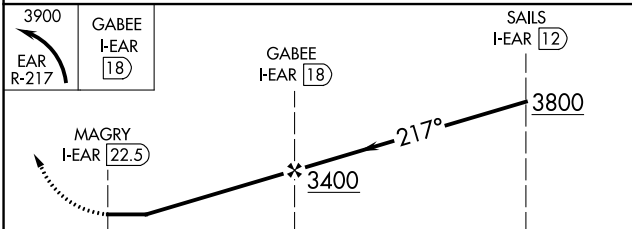
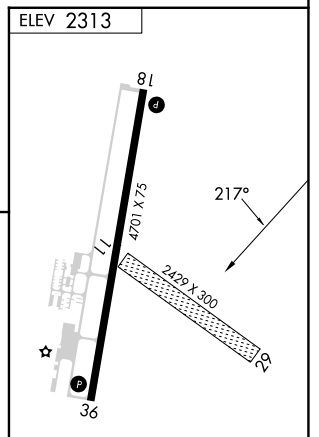
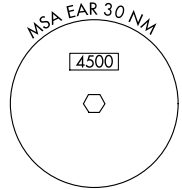
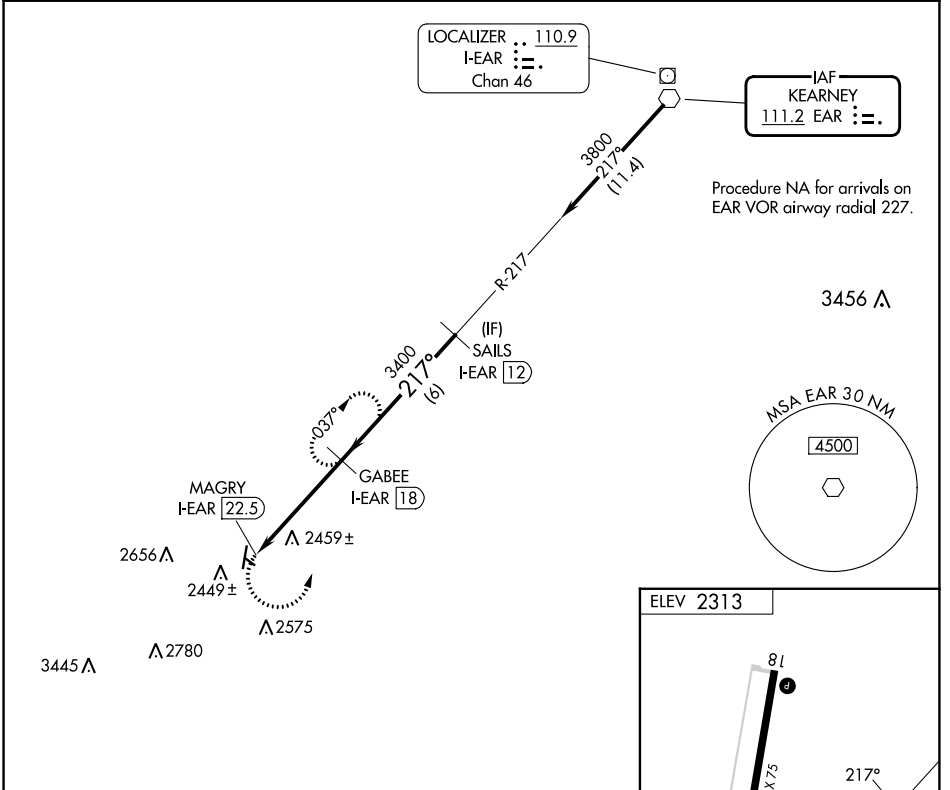
BREWSTER FLD (HDE)

DME required.

▽ DME from I-EAR localizer.
▲ Simultaneous reception of EAR VOR and I-EAR DME required.
 When local altimeter setting not received, use Kearney altimeter setting and increase all MDA 80 feet and increase all visibilities ¼ SM.

MISSED APPROACH: Climbing left turn to 3900 on EAR VOR R-217 to GABEE/I-EAR 18 DME and hold.

AWOS-3 121.325	DENVER CENTER 132.7 226.675	UNICOM 122.8 (CTAF) 0
--------------------------	---------------------------------------	---------------------------------



CATEGORY	A	B	C	D
C CIRCLING	3100-1 787 (800-1)	3100-1¼ 787 (800-1¼)	3100-2¼ 787 (800-2¼)	3100-2½ 787 (800-2½)

MIRL Rwy 18-36 **0**
 REIL Rwys 18 and 36 **0**

NC-2, 26 DEC 2024 to 23 JAN 2025

NC-2, 26 DEC 2024 to 23 JAN 2025