

GARLAND FIVE DEPARTURE

CLEBURNE, TEXAS

SC-2, 26 DEC 2024 to 23 JAN 2025

**TOP ALTITUDE:
ASSIGNED BY ATC**

LONE STAR DEP CON
135.975 379.9
CTAF
122.8

TAKEOFF MINIMUMS

Rwy 15: Standard.

Rwy 33: 300-1½ or standard with minimum climb of 422'/NM to 1200.

NOTE: SOLDO Transition: ATC assigned.

RADAR and DME required.

TEXARKANA
116.3 TKX
Chan 110

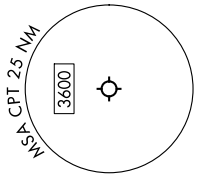
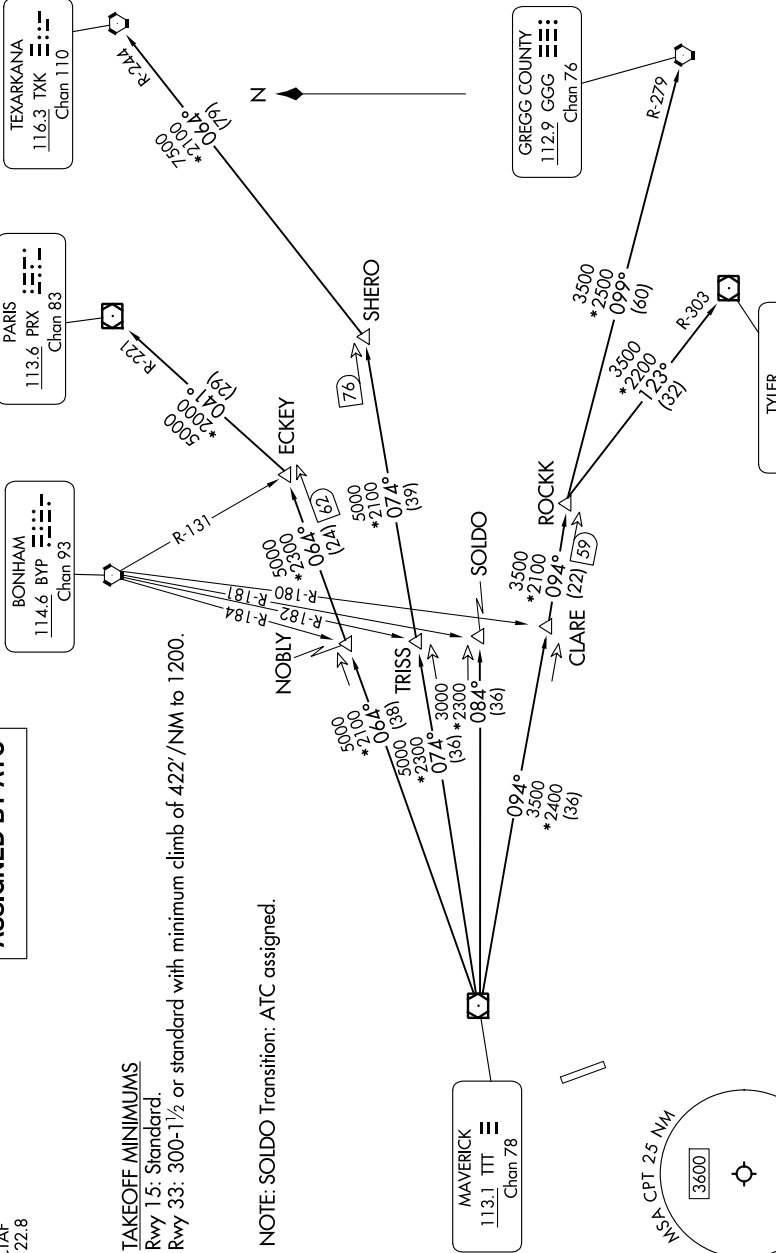
PARIS
113.6 PRX
Chan 83

BONHAM
114.6 BYP
Chan 93

MAVERICK
113.1 TTT
Chan 78

GREGG COUNTY
112.9 GGG
Chan 76

TYLER
114.2 TYR
Chan 89



NOTE: Chart not to scale.

(CONTINUED ON FOLLOWING PAGE)

SC-2, 26 DEC 2024 to 23 JAN 2025