

# KUSSO ONE DEPARTURE (RNAV)

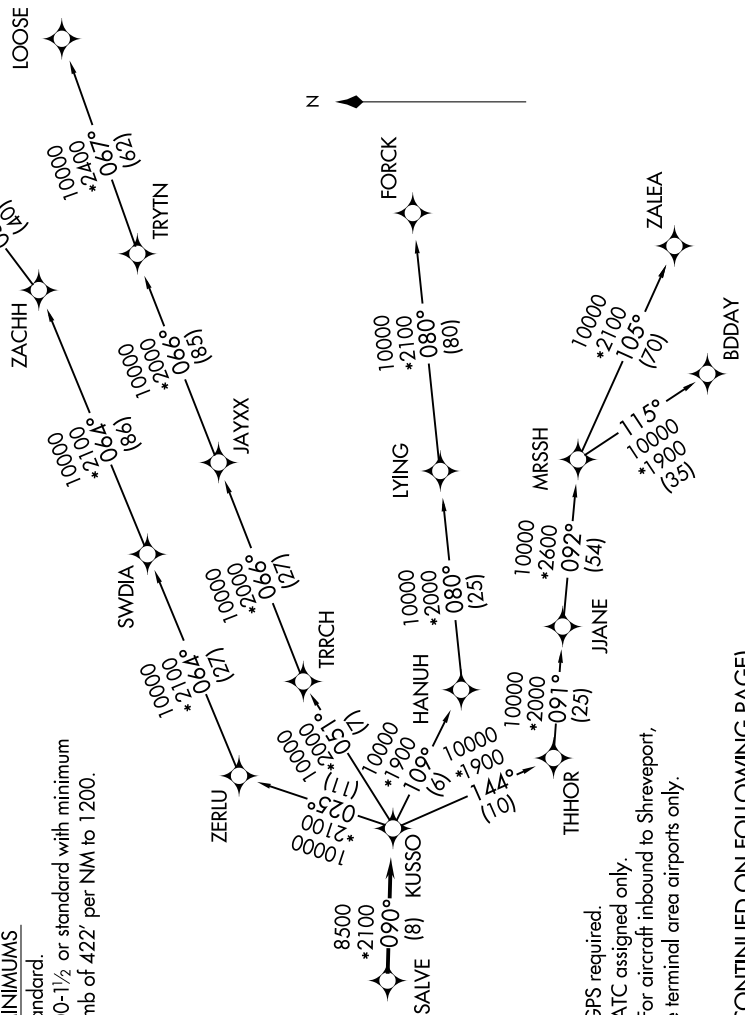
SC-2, 26 DEC 2024 to 23 JAN 2025

**TOP ALTITUDE:  
ASSIGNED BY ATC**

### TAKEOFF MINIMUMS

Rwy 15: Standard.  
Rwy 33: 300-1½ or standard with minimum climb of 422' per NM to 1200.

LONE STAR DEP CON  
135.975 379.9  
CTAF  
122.8



NOTE: RADAR required.  
NOTE: RNAV 1.  
NOTE: DME/DME/IRU or GPS required.  
NOTE: BDDAY Transition: ATC assigned only.  
NOTE: MRSSH Transition: For aircraft inbound to Shreveport, Jackson and Monroe terminal area airports only.

(CONTINUED ON FOLLOWING PAGE)

NOTE: Chart not to scale.

SC-2, 26 DEC 2024 to 23 JAN 2025

# KUSSO ONE DEPARTURE (RNAV)