

# SWABR ONE DEPARTURE (RNAV)

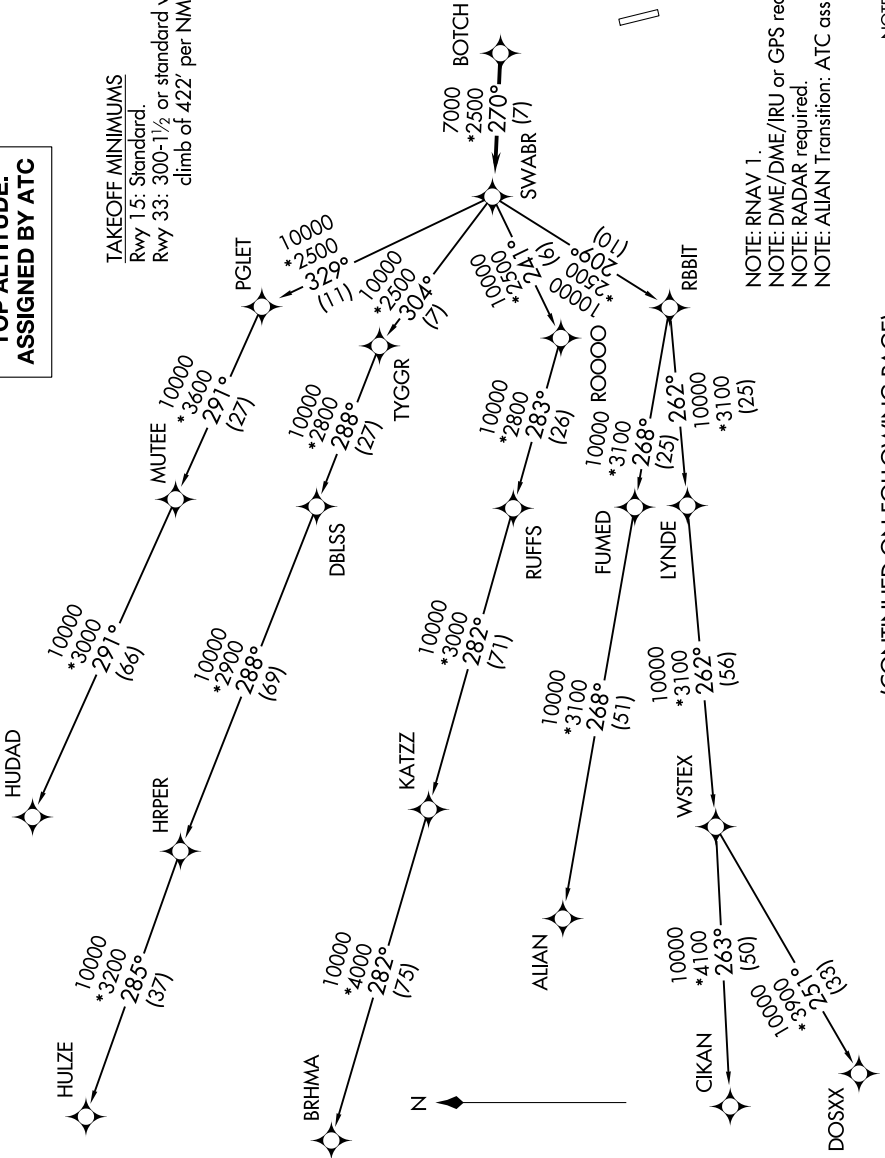
CLEBURNE, TEXAS

SC-2, 26 DEC 2024 to 23 JAN 2025

LONE STAR DEP CON  
135.975 379.9  
CTAF  
122.8

## TOP ALTITUDE: ASSIGNED BY ATC

TAKEOFF MINIMUMS  
Rwy 15: Standard.  
Rwy 33: 300-1½ or standard with minimum  
climb of 422' per NM to 1200.



NOTE: RNAV 1.  
NOTE: DME/DME/IRU or GPS required.  
NOTE: RADAR required.  
NOTE: ALIAN Transition: ATC assigned only.

NOTE: Chart not to scale.

(CONTINUED ON FOLLOWING PAGE)

SC-2, 26 DEC 2024 to 23 JAN 2025

# SWABR ONE DEPARTURE (RNAV)

(SWABR1.SWABR) 24MAR22

CLEBURNE, TEXAS

CLEBURNE RGNL (CPT)