

APP CRS	Rwy Idg	5000
301°	TDZE	1070
	Apt Elev	1086

RNAV (GPS) RWY 30

MONROE MUNI (E.F.T)

RNP APCH-GPS.

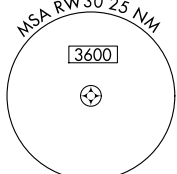
⚠ When local altimeter setting not received, use **Alberthus** altimeter setting and increase all MDA 100 feet, increase LNAV Cat C/D and Circling Cat C visibility ¼ mile.
⚠ VDP NA when using **Alberthus** altimeter setting. Rwy 30 helicopter visibility reduction below ¾ SM NA. Circling to Rwy 2-20 NA at night.

MISSED APPROACH:
 Climbing left turn to 3000
 direct DAVIS and hold.

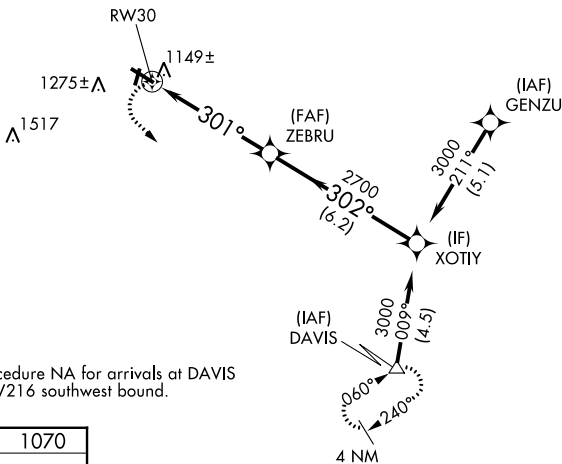
AWOS-3
118.375

ROCKFORD APP CON
126.0 327.0

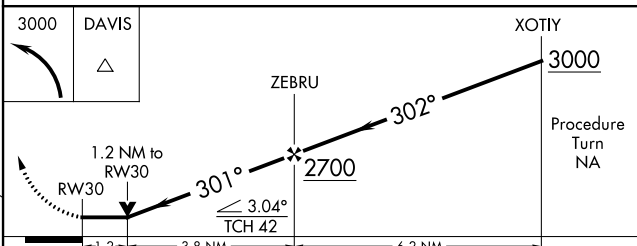
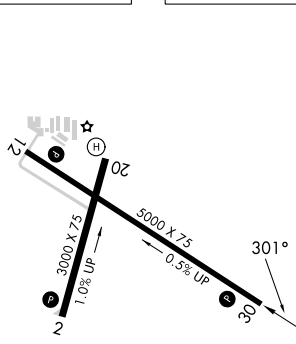
UNICOM
123.05 (CTAF)



2049 **⚠**



ELEV 1086 TDZE 1070



CATEGORY	A	B	C	D
LNAV MDA	1480-1	410 (400-1)	1480-1¼	410 (400-1¼)
CIRCLING	1540-1 454 (500-1)	1640-1 554 (600-1)	1640-1½ 554 (600-1½)	1640-2 554 (600-2)

MIRL Rwy 12-30 and 2-20 **⚠**
 REIL Rwy 2, 12, 20, and 30 **⚠**

EC-3, 26 DEC 2024 to 23 JAN 2025

EC-3, 26 DEC 2024 to 23 JAN 2025