

(SEEVR.BRDJE5) 24305

# BRDJE FIVE ARRIVAL (RNAV)

AL-6039 (FAA)

Arrival Route

DALLAS-FORT WORTH INTL (DFW)

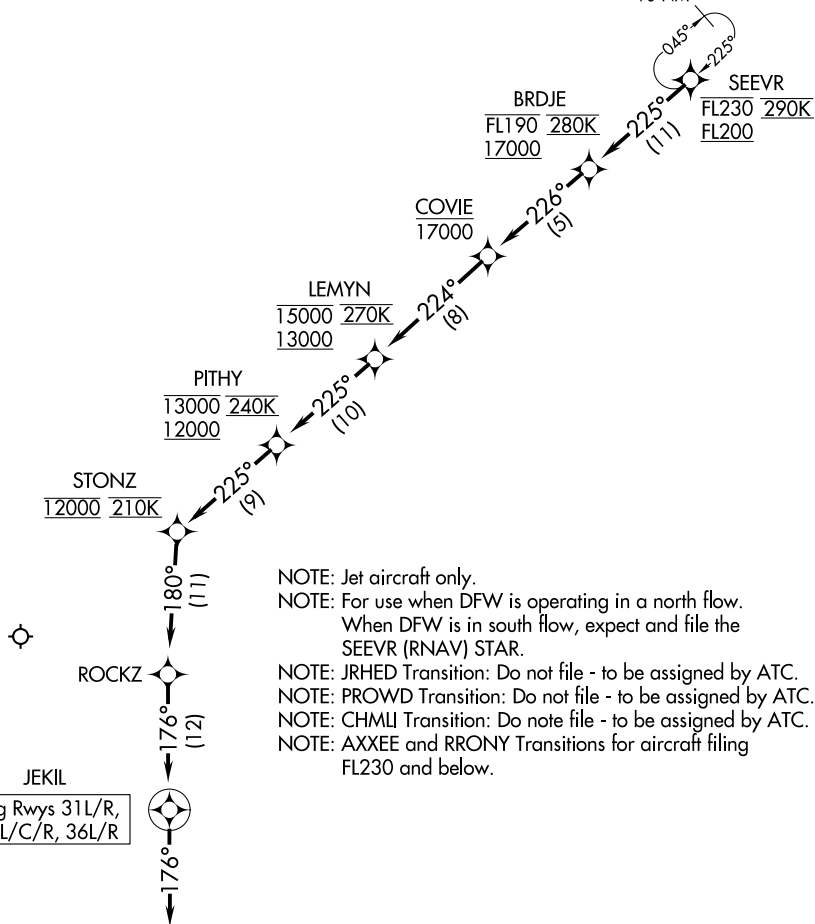
DALLAS-FORT WORTH, TEXAS

LONE STAR APP CON  
125.025 263.025  
D-ATIS ARR  
123.775

RNAV 1 - DME/DME/IRU or GPS.

RADAR required.

10 NM



NOTE: Chart not to scale.

## ARRIVAL ROUTE DESCRIPTION

From SEEVR on track 225° to cross BRDJE between 17000 and FL190 and at 280K, then on track 226° to cross COVIE at or below 17000, then on track 224° to cross LEMYN between 13000 and 15000 and at 270K, then on track 225° to cross PITHY between 12000 and 13000 and at 240K, then on track 225° to cross STONZ at 12000 and at 210K, then on track 180° to ROCKZ, then on track 176° to JEKIL, then on track 176°. Expect RADAR vectors to final approach course.

BRDJE FIVE ARRIVAL (RNAV)

Arrival Route

(SEEVR.BRDJE5) 11JUL24

DALLAS-FORT WORTH, TEXAS  
DALLAS-FORT WORTH INTL (DFW)

SC-2, 26 DEC 2024 to 23 JAN 2025

SC-2, 26 DEC 2024 to 23 JAN 2025