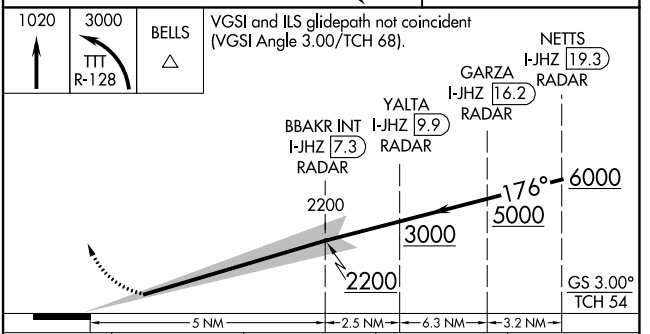
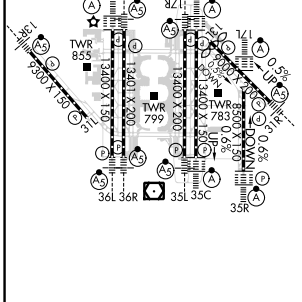
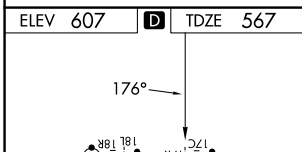
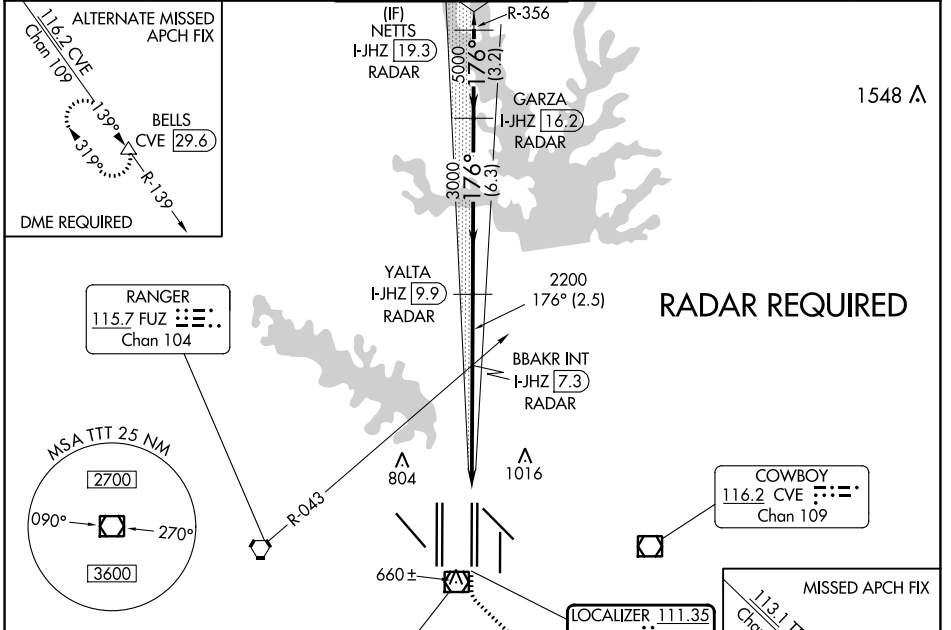


LOC/DME I-JHZ <b>111.35</b>	APP CRS <b>176°</b>	Rwy ldg <b>13400</b> TDZE <b>567</b> Apt Elev <b>607</b>
Chan <b>50 (Y)</b>		

# CONVERGING ILS RWY 17R

DALLAS-FORT WORTH INTL (DFW)

<b>▼</b> DME or RADAR required. Simultaneous approach authorized with Converging ILS Rwy 13R.	MALSR	MISSED APPROACH: Climb to 1020 then climbing left turn to 3000 on TTT VOR/DME R-128 to BELLS INT/TTT 33.2 DME and hold.			
D-ATIS ARR <b>123.775</b> DEP <b>135.925</b>	LONE STAR APP CON <b>127.075</b>	DFW TOWER <b>126.55 127.5</b> EAST <b>124.15 134.9</b> WEST	GND CON <b>121.65 121.8</b> EAST <b>121.85</b> WEST	CLNC DEL <b>128.25</b>	CPDLC



ELEV <b>607</b>	<b>D</b>	TDZE <b>567</b>		
176°				
1020	3000	BELLS		
↑	TTT	△		
	R-128			
CATEGORY	A	B	C	D
S-ILS 17R		767/18	200 (200-½)	