

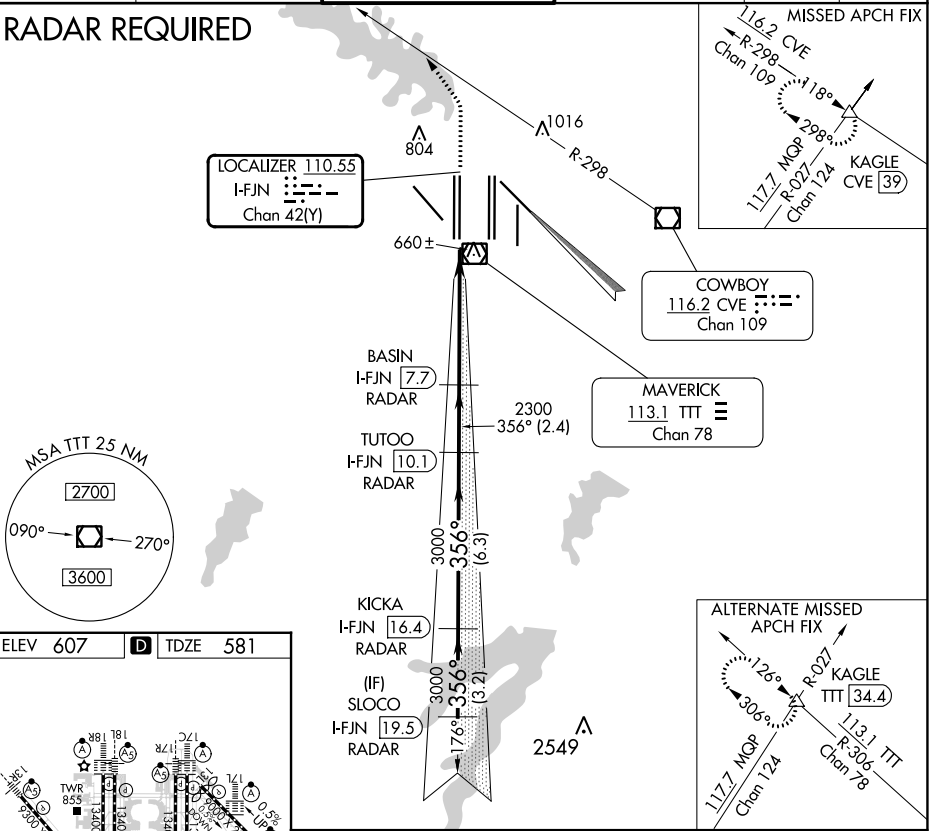
LOC/DME I-FJN 110.55 Chan 42(Y)	APP CRS 356°	Rwy Idg TDZE 13401 581	Apt Elev 607
---	------------------------	--	------------------------

CONVERGING ILS RWY 36R

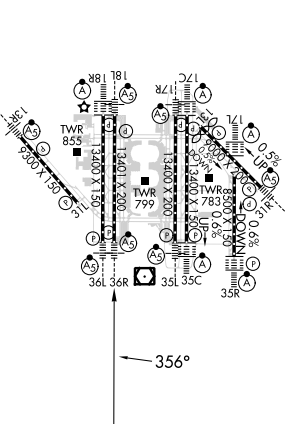
DALLAS-FORT WORTH INTL (DFW)

Simultaneous approach authorized with Converging ILS Rwy 31R. DME or Radar required.		MALSR 	MISSED APPROACH: Climb to 1100, then climbing left turn to 3000 on heading 320° and CVE VOR/DME R-298 to KAGLE INT/CVE 39 DME and hold.			
D-ATIS ARR 123.775 DEP 135.925	LONE STAR APP CON 118.425	DFW TOWER 126.55 127.5 EAST 124.15 134.9 WEST		GND CON 121.65 121.8 EAST 121.85 WEST	CLNC DEL 128.25	CPDLC

RADAR REQUIRED



ELEV 607	D	TDZE 581
-----------------	----------	-----------------



HIRL all Rwy 36R
 REIL Rwy 36R
 TDZ/CL all Rwy 36R

1100 3000 hdg 320° CVE R-298 KAGLE	BASIN I-FJN 7.7 RADAR TUTOO I-FJN 10.1 RADAR KICKA I-FJN 16.4 RADAR SLOCO I-FJN 19.5 RADAR	2300 3000 3000 3000 4000 GS 3.00° TCH 50 VGSi and ILS glidepath not coincident (VGSi Angle 3.00/TCH 66).	5.3 NM 2.4 NM 6.3 NM 3.2 NM	
CATEGORY	A	B	C	D
S-ILS 36R	781/18		200 (200-1/2)	