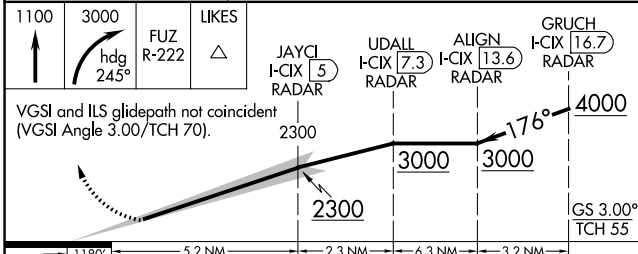
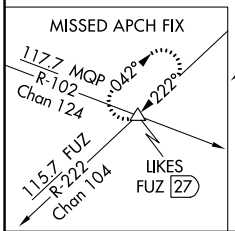
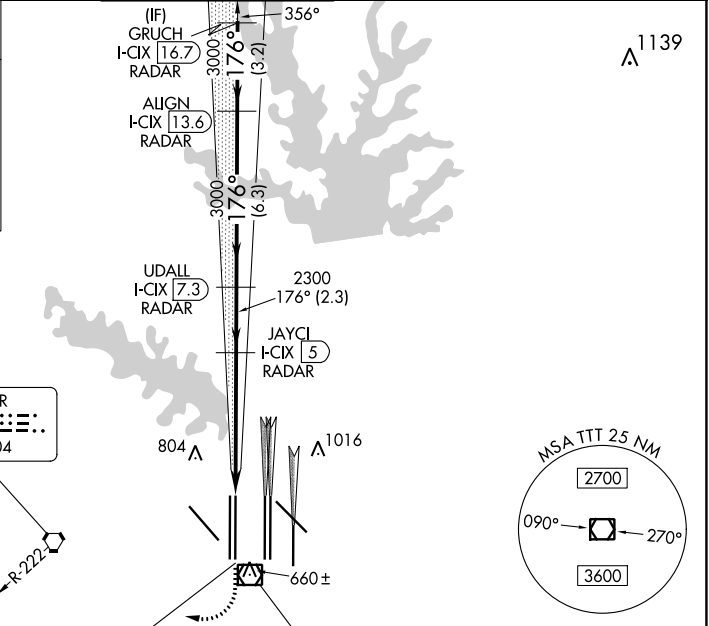
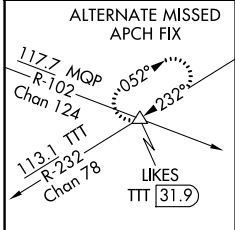


LOC/DME I-CIX 110.55 Chan 42(Y)	APP CRS 176°	Rwy Idg 13401 TDZE 602 Apt Elev 606
---	------------------------	--

ILS RWY 18L (SA CAT I & II)

DALLAS-FORT WORTH INTL (DFW)

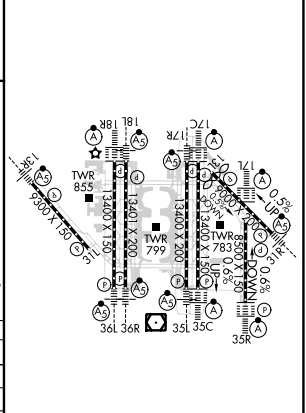
RADAR required for procedure entry. DME or RADAR required.		MALSR 	MISSED APPROACH: Climb to 1100, then climbing right turn to 3000 on heading 245° and FUZ VORTAC R-222 to LIKES INT/FUZ 27 DME and hold.		
D-ATIS ARR 123.775 DEP 135.925	LONE STAR APP CON 118.425	DFW TOWER 126.55 127.5 EAST 124.15 134.9 WEST		GND CON 121.65 121.8 EAST 121.85 WEST	CLNC DEL 128.25 CPDLC



CATEGORY	A	B	C	D
S-ILS 18L	SA CAT I	RA 158/14	150 DA 752	
S-ILS 18L	SA CAT II	RA 115/12	100 DA 702	

SA CATEGORY I & II ILS - SPECIAL AIRCREW & AIRCRAFT CERTIFICATION REQUIRED

ELEV 606	TDZE 602
----------	----------



HIRL all Rwys
REIL Rws 13L and 31L
TDZ/CL all Rws except 13L and 31L

SC-2, 26 DEC 2024 to 23 JAN 2025

SC-2, 26 DEC 2024 to 23 JAN 2025