

LOC/DME I-VYV <b>111.9</b> Chan <b>56</b>	APP CRS <b>176°</b>	Rwy Ldg <b>13400</b> TDZE <b>607</b> Apt Elev <b>607</b>
---	------------------------	--

# ILS RWY 18R (CONVERGING)

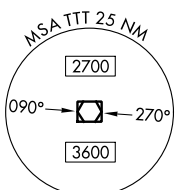
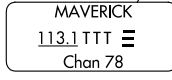
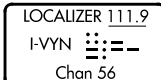
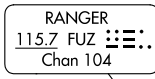
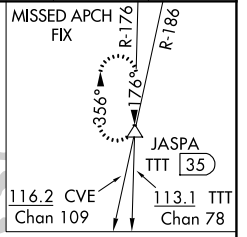
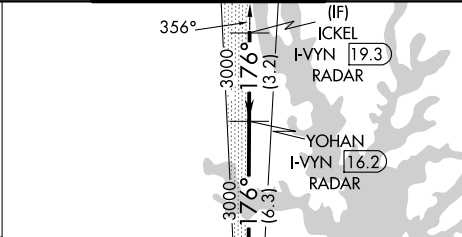
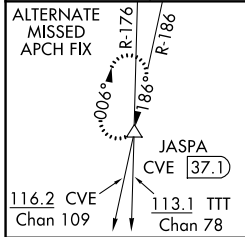
DALLAS-FORT WORTH INTL (DFW)

DME and RADAR required.

Simultaneous approach authorized with CONVERGING ILS RWY 13R, CONVERGING ILS RWY 17C, and CONVERGING ILS 17R.

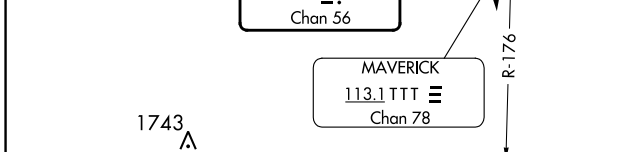
ALSF-2 MISSED APPROACH: Climb to 3000 then climb to 4000 on heading 170° and TTT VOR/DME R-176 to JASPA/TTT 35 DME and hold.

D-ATIS ARR <b>123.775</b> DEP <b>135.925</b>	LONE STAR APP CON <b>118.425</b>	DFW TOWER <b>126.55 127.5</b> EAST <b>124.15 134.9</b> WEST	GND CON <b>121.65 121.8</b> EAST <b>121.85</b> WEST	CLNC DEL <b>128.25</b>	CPDLC
--	-------------------------------------	---	---	---------------------------	-------

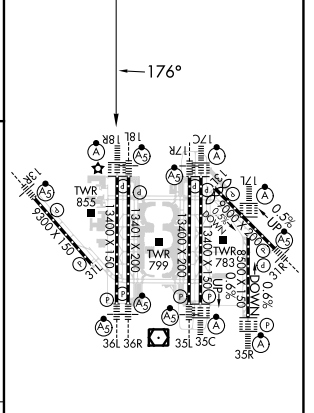
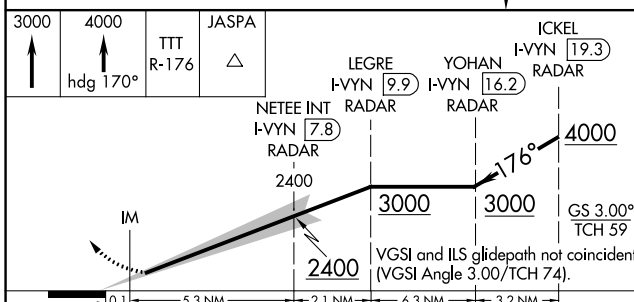


SC-2, 26 DEC 2024 to 23 JAN 2025

SC-2, 26 DEC 2024 to 23 JAN 2025



ELEV 607	<b>D</b>	TDZE 607
----------	----------	----------



CATEGORY	A	B	C	D
S-ILS 18R		807/18	200 (200-1/2)	

HIRL all Rwys  
REL Rwy 13L and 31L  
TDZ/CL all Rwys except 13L and 31L