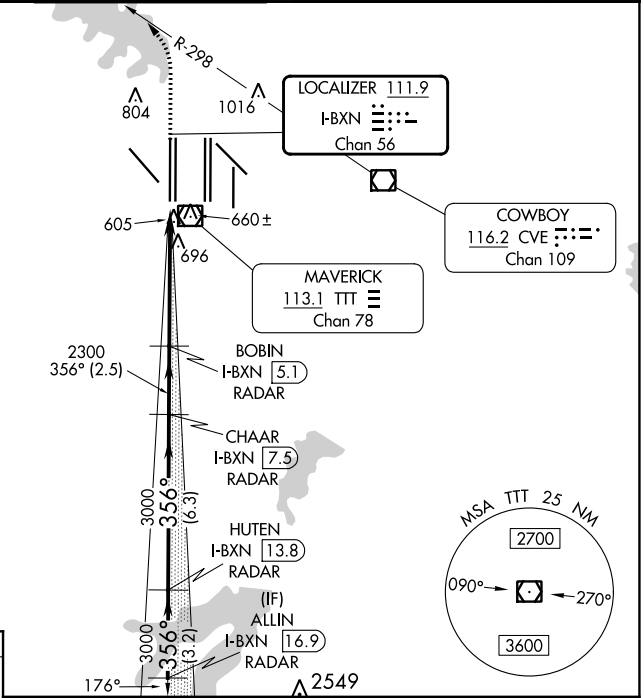
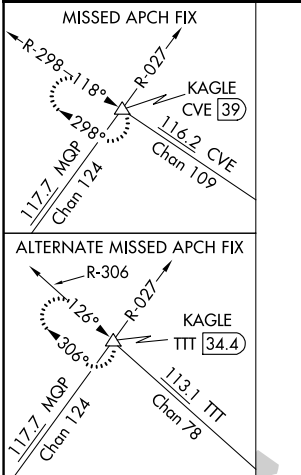


LOC/DME I-BXN 111.9 Chan 56	APP CRS 356°	Rwy Idg 13400 TDZE 588 Apt Elev 606
---	------------------------	--

ILS RWY 36L (SA CAT II)

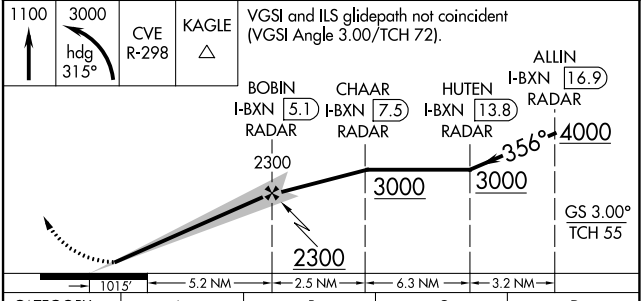
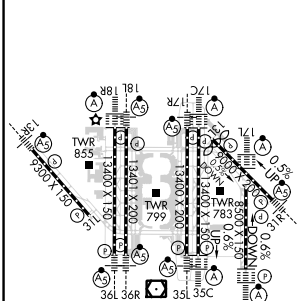
DALLAS-FORT WORTH INTL (DFW)

▼ DME or RADAR required. Reduced Lighting: Requires specific OPSPEC, MSPEC, or LOA approval and use of autoland or HUD to touchdown.		MALSR 	MISSED APPROACH: Climb to 1100 then climbing left turn to 3000 on heading 315° and CVE VOR/DME R-298 to KAGLE INT/ CVE VOR/DME 39 DME and hold.		
D-ATIS ARR 123.775 DEP 135.925	LONE STAR APP CON 118.425	DFW TOWER 126.55 127.5 EAST 124.15 134.9 WEST	GND CON 121.65 121.8 EAST 121.85 WEST	CLNC DEL 128.25	CPDLC



RADAR REQUIRED

ELEV 606	D	TDZE 588
-----------------	----------	-----------------



CATEGORY	A	B	C	D
S-ILS 36L	RA 107/12 100 DA 688			
SA CATEGORY II ILS - SPECIAL AIRCREW & AIRCRAFT CERTIFICATION REQUIRED				

SC-2, 26 DEC 2024 to 23 JAN 2025

SC-2, 26 DEC 2024 to 23 JAN 2025