

(JASPA7.JASPA) 24305

AL-6039 (FAA)

DALLAS-FORT WORTH INTL (DFW)
DALLAS-FORT WORTH, TEXAS

JASPA SEVEN DEPARTURE (RNAV)

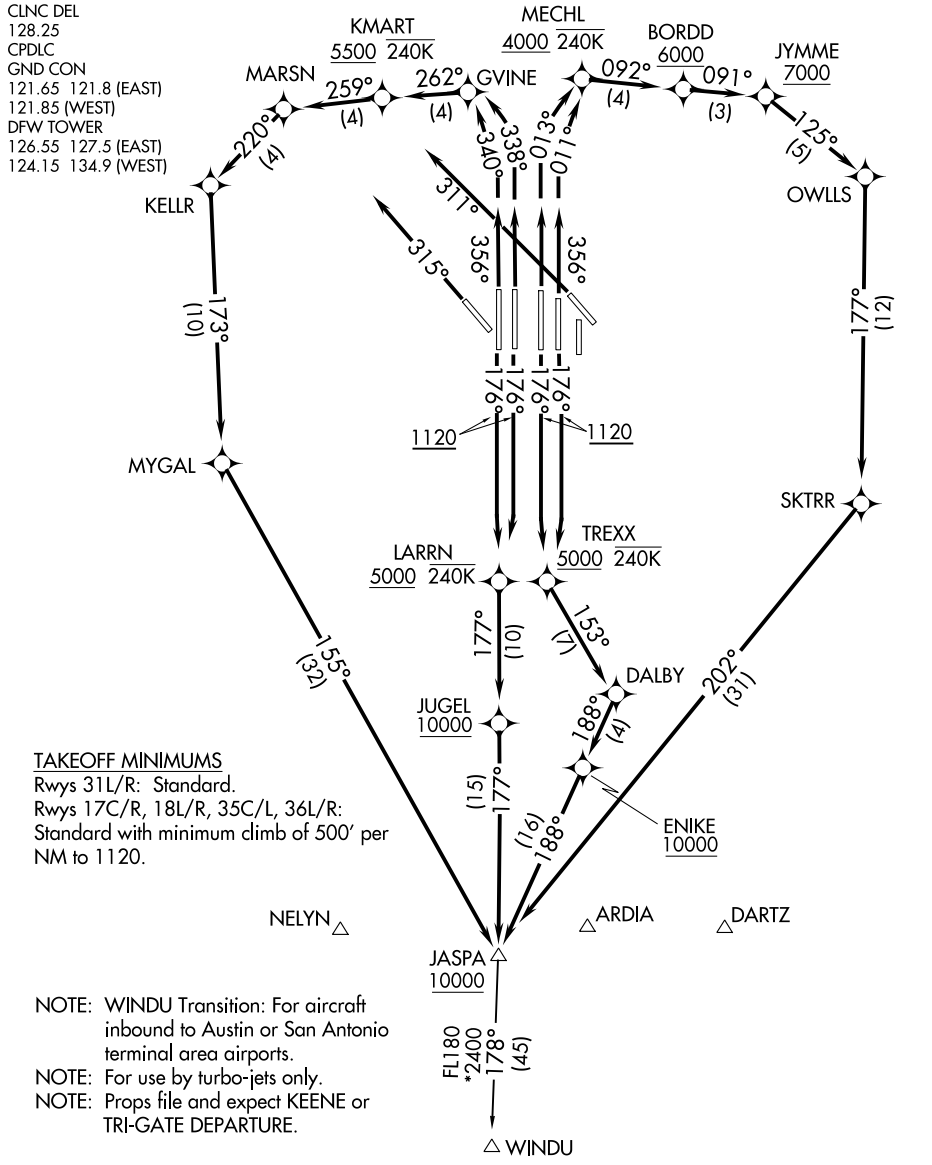
LONE STAR DEP CON
 125.125 353.95 (Rwys 17C/R)
 125.125 353.95 (Rwys 18L/R)
 126.475 363.15 (Rwys 36L/R)
 118.55 290.35 (Rwys 35L/C)
 D-ATIS DEP
 135.925
 CLNC DEL
 128.25
 CPDLC
 GND CON
 121.65 121.8 (EAST)
 121.85 (WEST)
 DFW TOWER
 126.55 127.5 (EAST)
 124.15 134.9 (WEST)

RNAV 1- DME/DME/IRU or GPS.
 RADAR required.

TOP ALTITUDE:
RWYS 13L/R, 17L/C/R, 10000
18L/R, 35L/C/R, 36L/R: 10000
RWYS 31L/R: 5000

SC-2, 26 DEC 2024 to 23 JAN 2025

SC-2, 26 DEC 2024 to 23 JAN 2025



TAKEOFF MINIMUMS
 Rwys 31L/R: Standard.
 Rwys 17C/R, 18L/R, 35C/L, 36L/R:
 Standard with minimum climb of 500' per
 NM to 1120.

NOTE: WINDU Transition: For aircraft
 inbound to Austin or San Antonio
 terminal area airports.
 NOTE: For use by turbo-jets only.
 NOTE: Props file and expect KEENE or
 TRI-GATE DEPARTURE.

(CONTINUED ON FOLLOWING PAGE)

NOTE: Chart not to scale.

JASPA SEVEN DEPARTURE (RNAV)

(JASPA7.JASPA) 03NOV22

DALLAS-FORT WORTH, TEXAS
DALLAS-FORT WORTH INTL (DFW)