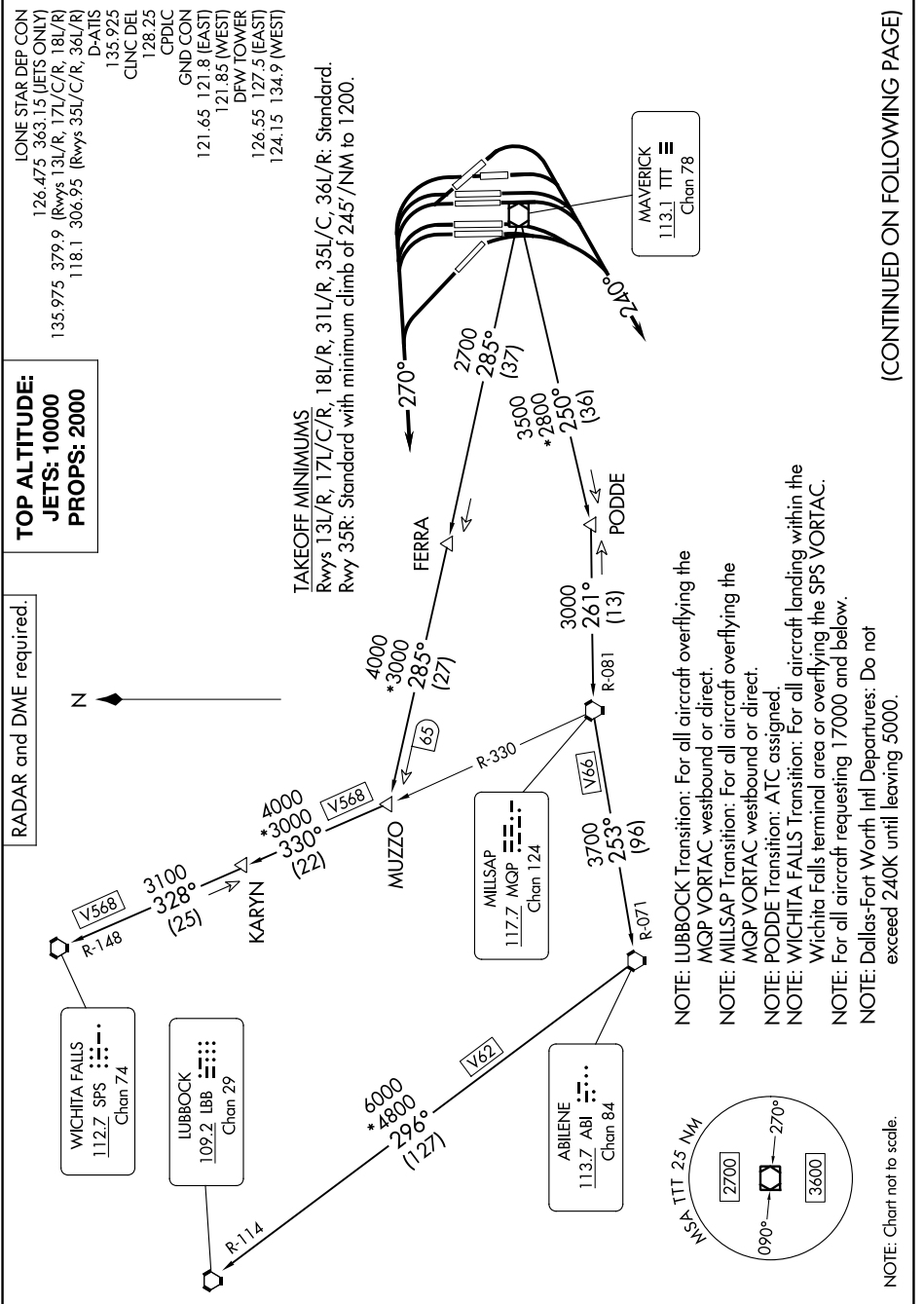


# KINGDOM FOUR DEPARTURE

SC-2, 26 DEC 2024 to 23 JAN 2025



**TOP ALTITUDE:**  
**JETS: 10000**  
**PROPS: 2000**

**RADAR and DME required.**

LONE STAR DEP CON  
 126.475 363.15 (JETS ONLY)  
 135.975 379.9 (Rwys 13L/R, 17L/C/R, 18L/R)  
 118.1 306.95 (Rwys 35L/C/R, 36L/R)  
 D-ATIS  
 135.925  
 CLNC DEL  
 128.25  
 CPDLC  
 GND CON  
 121.65 121.8 (EAST)  
 121.85 (WEST)  
 DFW TOWER  
 126.55 127.5 (EAST)  
 124.15 134.9 (WEST)

**TAKEOFF MINIMUMS**  
 Rwys 13L/R, 17L/C/R, 18L/R, 31L/R, 35L/C, 36L/R: Standard.  
 Rwy 35R: Standard with minimum climb of 245'/NM to 1200.

MAVERICK  
 113.1 TTT  
 Chan 78

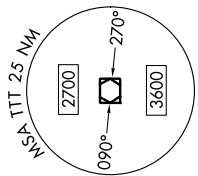
MILLSAP  
 117.7 MQP  
 Chan 124

ABILENE  
 113.7 ABL  
 Chan 84

WICHITA FALLS  
 112.7 SFS  
 Chan 74

LUBBOCK  
 109.2 LBB  
 Chan 29

- NOTE: LUBBOCK Transition: For all aircraft overlying the MQP VORTAC westbound or direct.
- NOTE: MILLSAP Transition: For all aircraft overlying the MQP VORTAC westbound or direct.
- NOTE: PODDE Transition: ATC assigned.
- NOTE: WICHITA FALLS Transition: For all aircraft landing within the Wichita Falls terminal area or overlying the SPS VORTAC.
- NOTE: For all aircraft requesting 17000 and below.
- NOTE: Dallas-Fort Worth Intl Departures: Do not exceed 240K until leaving 5000.



NOTE: Chart not to scale.

(CONTINUED ON FOLLOWING PAGE)

# KINGDOM FOUR DEPARTURE

SC-2, 26 DEC 2024 to 23 JAN 2025