

SC-2, 26 DEC 2024 to 23 JAN 2025

TOP ALTITUDE:
 RWYS 31L/R: 5000
 RWYS 17C/R, 18L/R,
 35L/C, 36L/R: 10000

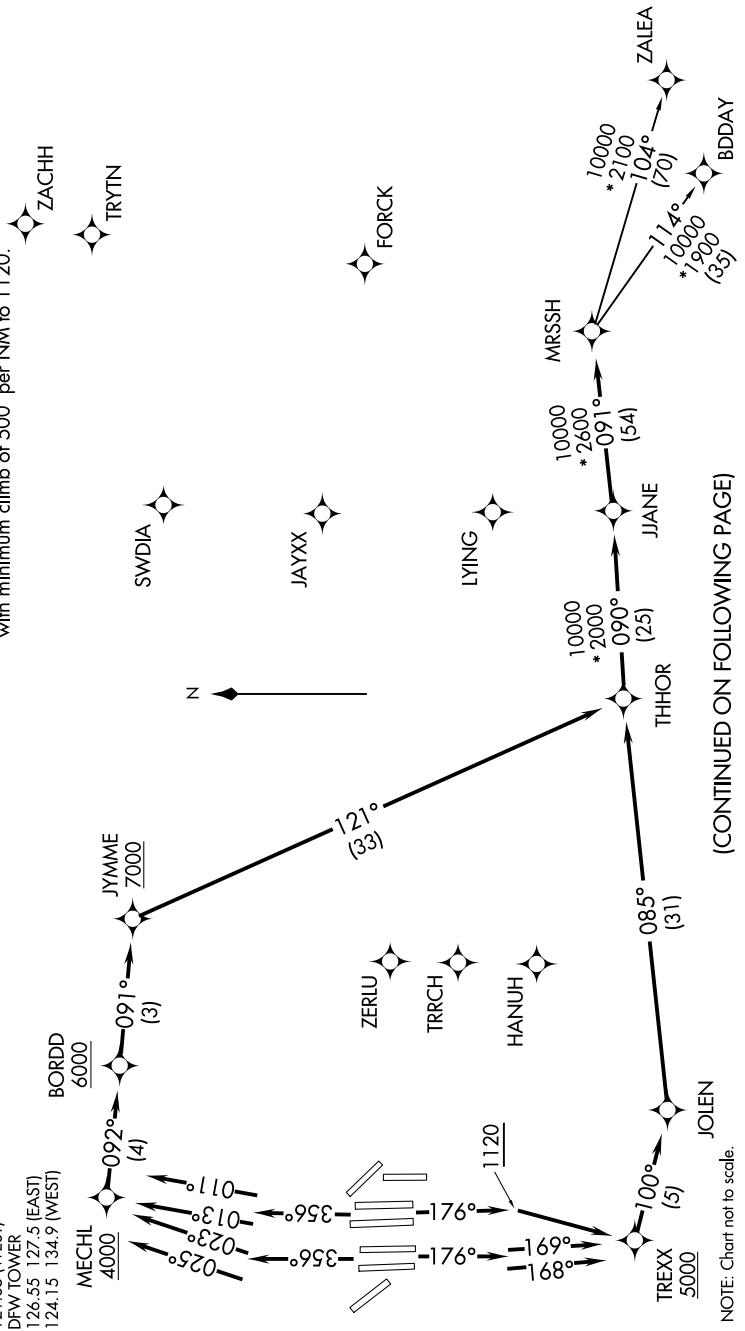
RNAV 1 - DME/DME/IRU or GPS.
 RADAR required.

TAKEOFF MINIMUMS

Rwys 31L/R: Standard.
 Rwys 17C/R, 18L/R, 35L/C, 36L/R: Standard
 with minimum climb of 500' per NM to 1120.

- NOTE: BDDAY Transition: ATC assigned only.
- NOTE: For use by turbojet aircraft only.
- NOTE: Non-RNAV capable props: file and expect DALLAS or GARLAND DEPARTURE.
- NOTE: RNAV-capable props: file and expect the KUSSO RNAV DEPARTURE.

- LONE STAR DEP CON
 118.55 290.35
 D-AIS DEP
 135.925
 CLNC DEL
 128.25
 CPDLC
 GND CON
 121.65 121.8 (EAST)
 121.85 (WEST)
 DFW TOWER
 126.55 127.5 (EAST)
 124.15 134.9 (WEST)



MRSSH THREE DEPARTURE (RNAV)
 (MRSSH3.MRSSH) 08SEP22

DALLAS-FORT WORTH, TEXAS
 DALLAS-FORT WORTH INTL (DFW)

(CONTINUED ON FOLLOWING PAGE)

SC-2, 26 DEC 2024 to 23 JAN 2025

NOTE: Chart not to scale.