

WAAS CH 97324 W17D	APP CRS 176°	Rwy Idg 13400 TDZE 562 Apt Elev 607
--	------------------------	--

RNAV (GPS) RWY 17C

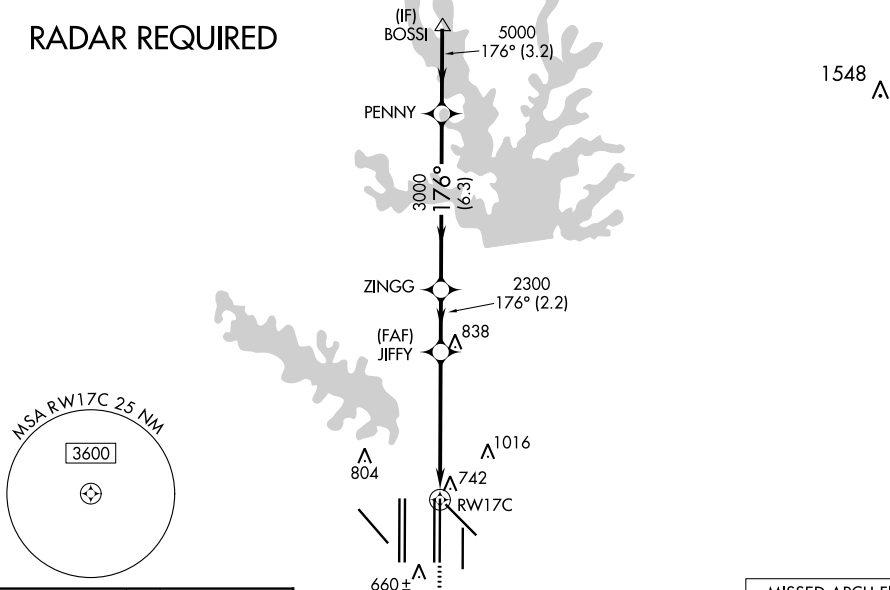
DALLAS-FORT WORTH INTL (DFW)

▼ For uncompensated Baro-VNAV systems, LNAV/VNAV NA below -4°C (25°F) or above 54°C (130°F). Simultaneous approach authorized with Rwy 17L and 18L/R. DME/DME RNP-0.3 NA. LNAV procedure NA during simultaneous operations. Use of FD or AP providing RNAV track guidance required during simultaneous operations.

ALSF-2
 MISSED APPROACH: Climb to at or below 3000 direct YUPRU then climb to 4000 on track 176° to RAYMA and hold.

ATIS ARR 123.775 DEP 135.925	LONE STAR APP CON 127.075	DFW TOWER 126.55 127.5 EAST 124.15 134.9 WEST	GND CON 121.65 121.8 EAST 121.85 WEST	CLNC DEL 128.25	CPDLC
--	-------------------------------------	---	---	---------------------------	-------

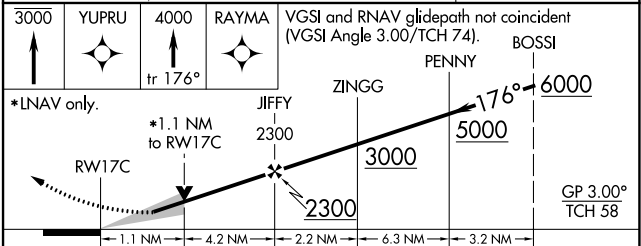
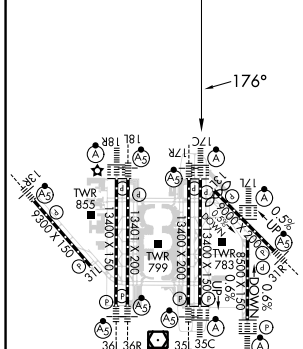
RADAR REQUIRED



SC-2, 26 DEC 2024 to 23 JAN 2025

SC-2, 26 DEC 2024 to 23 JAN 2025

ELEV 607	D	TDZE 562
-----------------	----------	-----------------



CATEGORY	A	B	C	D
LPV DA		762/18	200 (200-½)	
LNAV/VNAV DA		1068/60	506 (500-¼)	
LNAV MDA	1000/24	438 (400-½)	1000/40	438 (400-¾)

HIRL all Rwys
 REIL Rwys 13L and 31L
 TDZ/CL all Rwys except 13L and 31L