

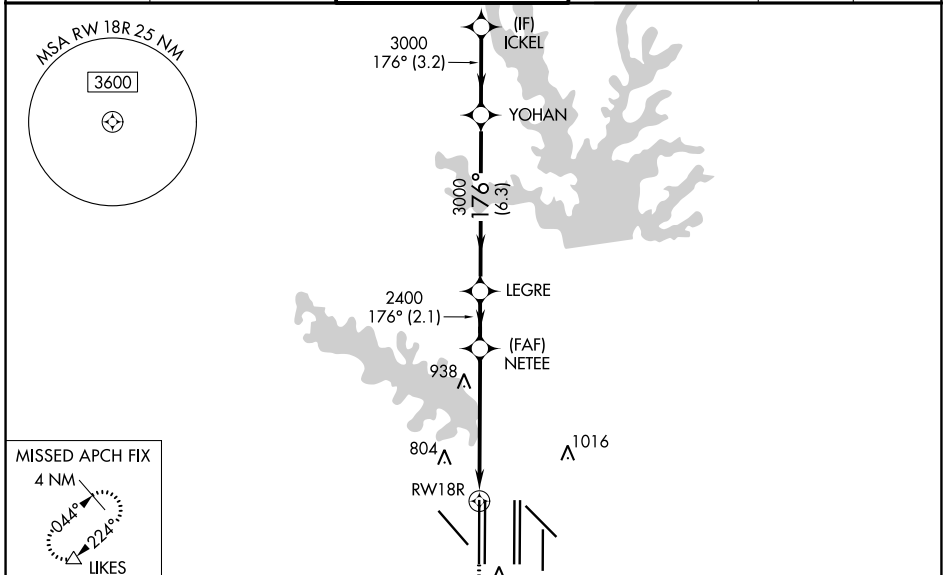
WAAS CH 99407 W18B	APP CRS 176°	Rwy Idg 13400 TDZE 606 Apt Elev 606
--	------------------------	--

RNAV (GPS) RWY 18R

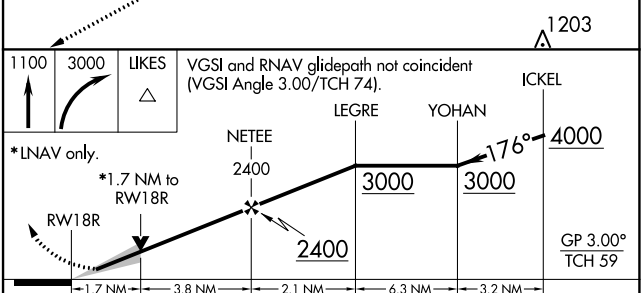
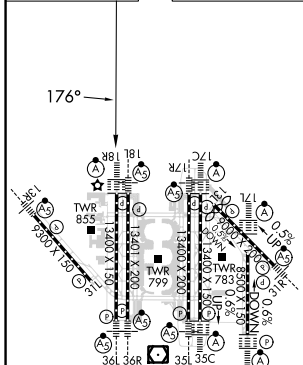
DALLAS-FORT WORTH INTL (DFW)

RADAR required for procedure entry. RNP APCH.		ALSIF-2 	MISSED APPROACH: Climb to 1100 then climbing right turn to 3000 direct LIKES and hold.
<p>▼ Simultaneous approach authorized with Rwy 17L/C/R. For uncompensated Baro-VNAV systems, LNAV/VNAV NA below -4°C or above 54°C. LNAV procedure NA during simultaneous operations. Use of FD or AP providing RNAV track guidance required during simultaneous operations. For inop ALS, increase LNAV/VNAV all Cats visibility to RVR 6000 and LNAV Cats C and D visibility to 1¼ SM.</p>			

D-ATIS ARR 123.775 DEP 135.925	LONE STAR APP CON 118.425	DFW TOWER 126.55 EAST 127.5 WEST	GND CON 121.65 EAST 121.8 WEST	CLNC DEL 128.25	CPDLC
--	-------------------------------------	--	--	---------------------------	-------



ELEV 606	D	TDZE 606
-----------------	----------	-----------------



CATEGORY	A	B	C	D
LPV DA		806/18	200 (200-½)	
LNAV/VNAV DA		1012/40	406 (500-¾)	
LNAV MDA	1220/24	614 (700-½)	1220-1⅓	614 (700-1⅓)

HIRL all Rwys
REIL Rws 13L and 31L
TDZ/CL all Rws except 13L and 31L

SC-2, 26 DEC 2024 to 23 JAN 2025

SC-2, 26 DEC 2024 to 23 JAN 2025