

WAAS CH 99703 W31A	APP CRS 315°	Rwy Idg 9300 TDZE 581 Apt Elev 607
--	------------------------	---

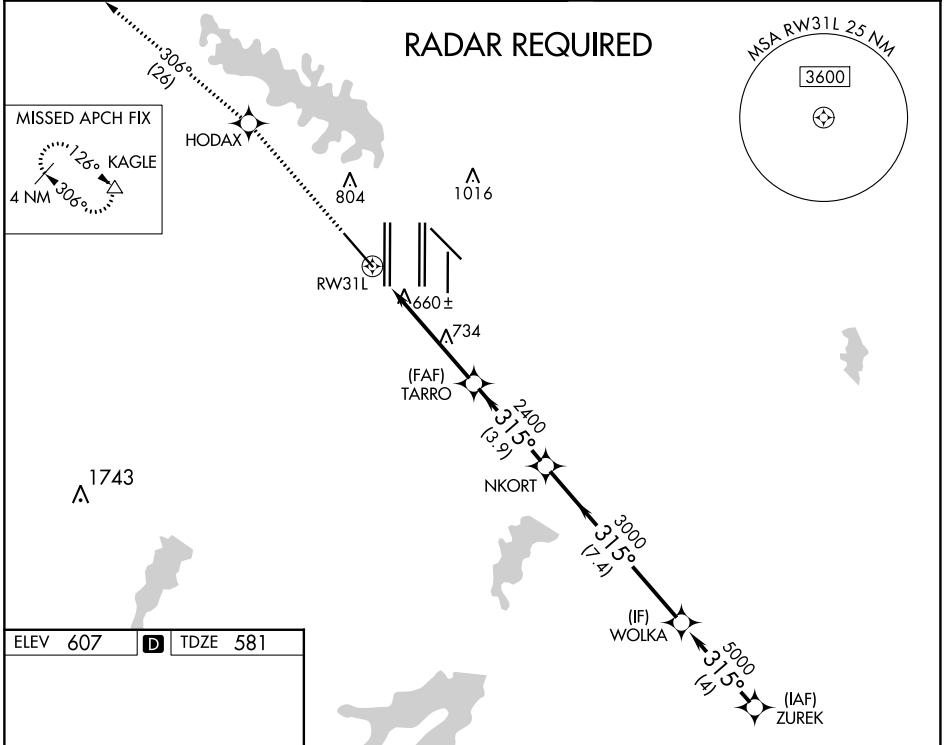
RNAV (GPS) Y RWY 31L

DALLAS-FORT WORTH INTL (DFW)

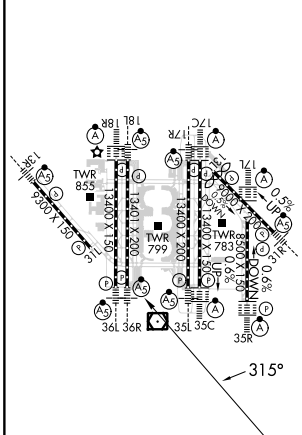
⚠ For uncompensated Baro-VNAV systems, LNAV/VNAV NA below -4°C (25°F) or above 54°C (130°F). Simultaneous approach authorized with Rwy 31R. DME/DME RNP-0.3 NA. LNAV procedure NA during simultaneous operations. Use of FD or AP providing RNAV track guidance required during simultaneous operations.

MISSED APPROACH: Climb to 3000 direct HODAX and on track 306° to KAGLE and hold.

D-ATIS ARR 123.775 DEP 135.925	LONE STAR APP CON 118.425 127.075 119.4	DFW TOWER 126.55 127.5 EAST 124.15 134.9 WEST	GND CON 121.65 121.8 EAST 121.85 WEST	CLNC DEL 128.25	CPDLC
--	---	---	---	---------------------------	-------

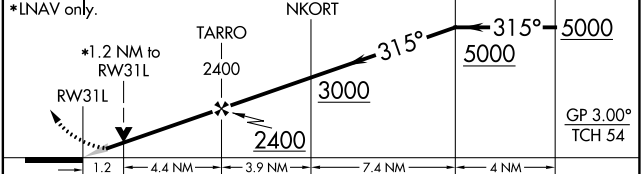


ELEV 607	D	TDZE 581
-----------------	----------	-----------------



HIRL all Rws
REIL Rws 13L and 31L
TDZ/CL all Rws except 13L and 31L

3000 ↑	HODAX ✦	tr 306°	KAGLE △	VGSI and RNAV glidepath not coincident (VGSI Angle 3.13/TCH 72).
			WOLKA	ZUREK



CATEGORY	A	B	C	D
LPV DA		831/40	250 (300-¾)	
LNAV/VNAV DA		907/50	326 (400-1)	
LNAV MDA	1060/55	479 (500-1)	1060-1¾	479 (500-1¾)

SC-2, 26 DEC 2024 to 23 JAN 2025

SC-2, 26 DEC 2024 to 23 JAN 2025