

NDB/DME YP 317 Chan 122 (117.5)	APP CRS 237°	Rwy Idg 6000 TDZE 90 Apt Elev 91
---	------------------------	---

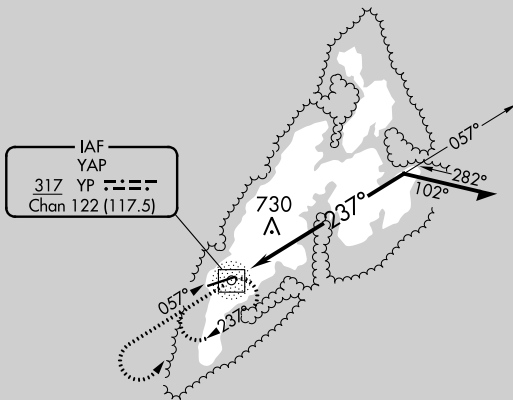
NDB RWY 25

YAP INTL (T11)(PTYA)

⚠ Circling NA north of Rwy 7-25.
No controlled airspace below 5500.

MISSED APPROACH: Climb to 1800 then left turn direct YP NDB/DME and hold.

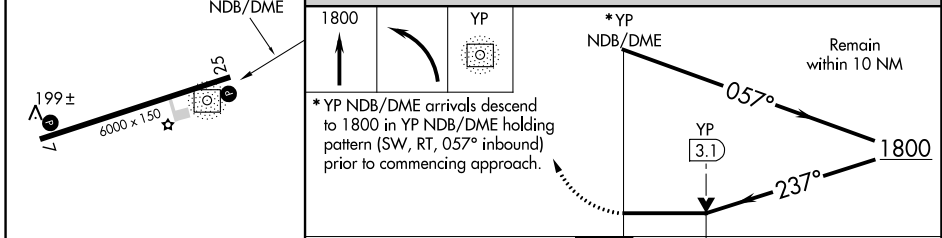
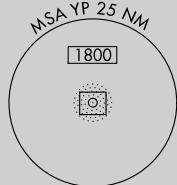
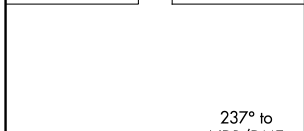
YAP RADIO
123.6 (CTAF)



PAC, 26 DEC 2024 to 20 FEB 2025

PAC, 26 DEC 2024 to 20 FEB 2025

ELEV 91	TDZE 90
---------	---------



*YP NDB/DME arrivals descend to 1800 in YP NDB/DME holding pattern (SW, RT, 057° inbound) prior to commencing approach.

CATEGORY	A	B	C	D
S-25	1080-1¼ 990 (1000-1¼)	1080-1½ 990 (1000-1½)	1080-3	990 (1000-3)
C CIRCLING	1080-1¼ 989 (1000-1¼)	1080-1½ 989 (1000-1½)	1080-3	989 (1000-3)

YAP ISLAND, FM
Orig-C 27JAN22

09°30'N-138°05'E

YAP INTL (T11)(PTYA) NDB RWY 25