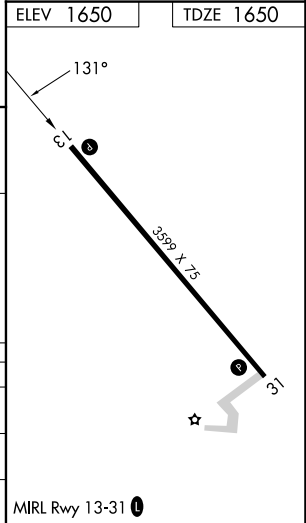
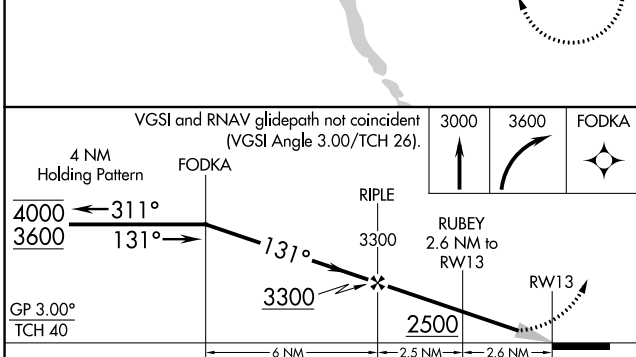
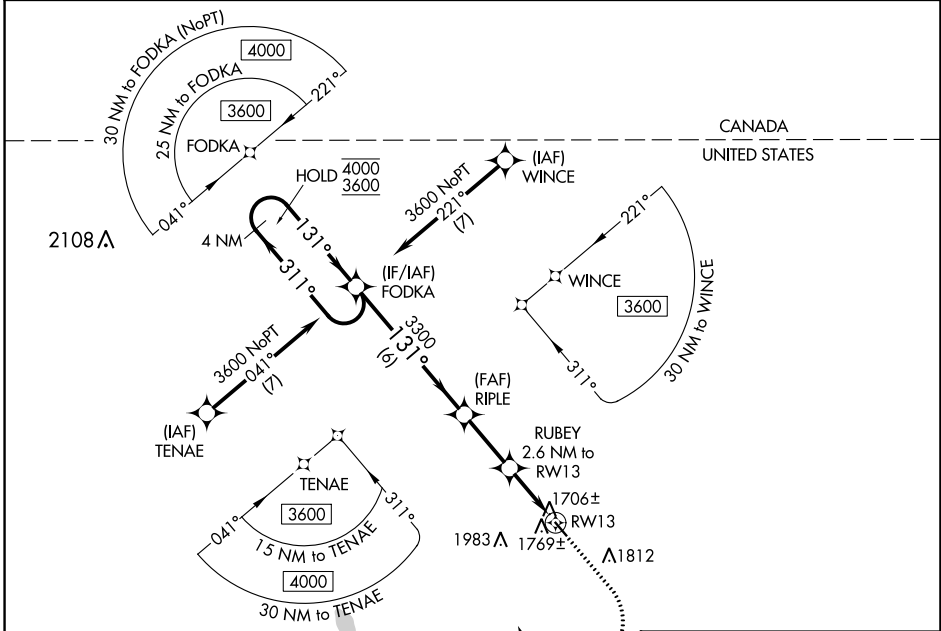


WAAS CH 45844 W13A	APP CRS 131°	Rwy Idg TDZE Apt Elev	3599 1650 1650
--	------------------------	-----------------------------	---

RNAV (GPS) RWY 13

MOHALL MUNI (HBC)

RNP APCH - GPS.		MISSED APPROACH: Climb to 3000 then climbing right turn to 3600 direct FODKA and hold.
▼ ▲ NA	Use Minot Intl altimeter setting.	
MOT ASOS 118.725	MINOT APP CON ★ 119.6 363.8	UNICOM 122.8 (CTAF) 0



CATEGORY	A	B	C	D
LPV DA	1977-1 327 (400-1)			NA
LNAV MDA	2100-1	450 (500-1)	2100-1 $\frac{3}{8}$ 450 (500-1 $\frac{3}{8}$)	NA
CIRCLING	2220-1	570 (600-1)	2380-2 730 (800-2)	NA

NC-1, 26 DEC 2024 to 23 JAN 2025

NC-1, 26 DEC 2024 to 23 JAN 2025