

KARRR SEVEN DEPARTURE (RNAV)

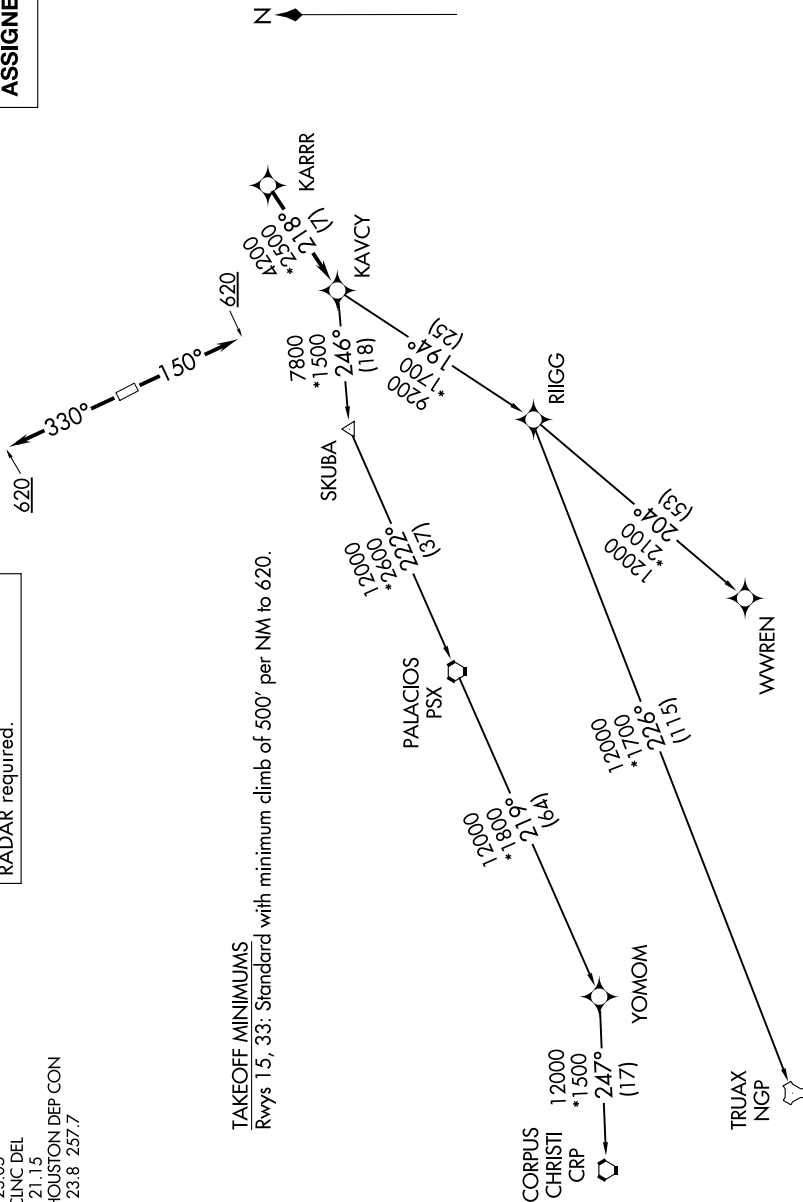
**TOP ALTITUDE:
ASSIGNED BY ATC**

SC-5, 26 DEC 2024 to 23 JAN 2025

RNAV-1 DME/DME/IRU or GPS.
RADAR required.

CTAF 123.05
CLNC DEL 121.15
HOUSTON DEP CON 123.8 257.7

TAKEOFF MINIMUMS
Rwys 15, 33: Standard with minimum climb of 500' per NM to 620.



(NARRATIVE ON FOLLOWING PAGE)

NOTE: Chart not to scale.

SC-5, 26 DEC 2024 to 23 JAN 2025

KARRR SEVEN DEPARTURE (RNAV)