

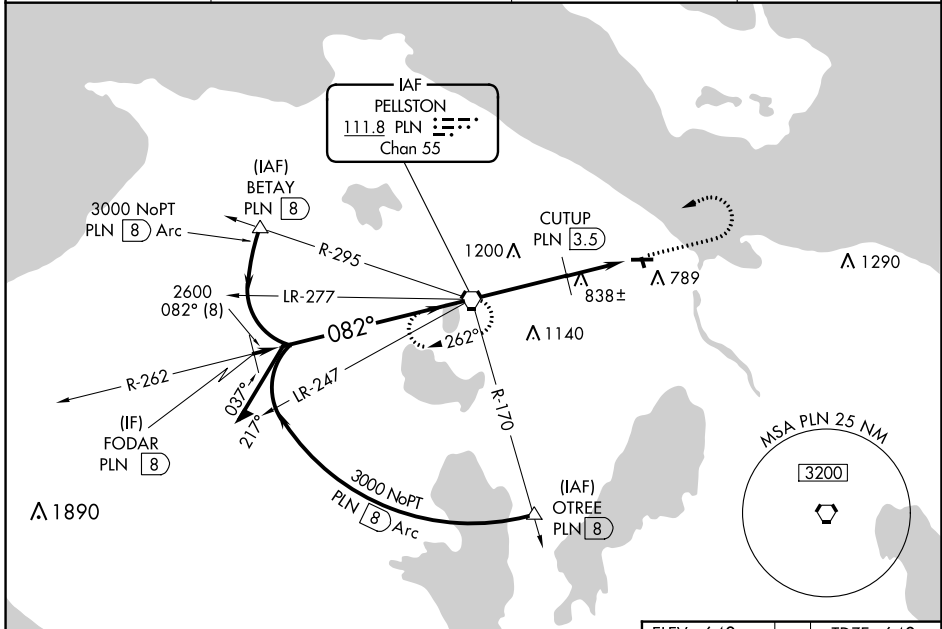
VORTAC PLN <b>111.8</b> Chan <b>55</b>	APP CRS <b>082°</b>	Rwy Idg <b>4004</b> TDZE <b>640</b> Apt Elev <b>640</b>
--	------------------------	---

**VOR RWY 10**  
CHEBOYGAN COUNTY (SLH)

**▼** Helicopter visibility reduction below 1 SM NA. Night landing Rwy 10, 17, 35 NA. When local altimeter setting not received, use Pellston altimeter setting; increase all MDA 60 feet; increase S-10 Cat B visibility ¼ SM, S-10 Cat C visibility ½ SM, Circling Cat B visibility ¼ SM and Circling Cat C visibility ½ SM; increase CUTUP fix minimums S-10 Cat C visibility ½ SM.

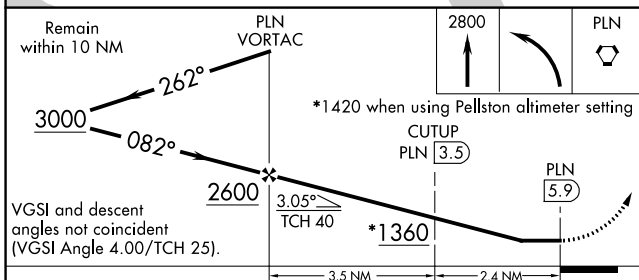
**MISSED APPROACH:**  
Climb to 2800 then left turn direct PLN VORTAC and hold.

AWOS-3 <b>118.175</b>	MINNEAPOLIS CENTER <b>134.6 354.05</b>	UNICOM <b>122.8 (CTAF)</b>	<b>122.5 0</b>
--------------------------	---	-------------------------------	----------------

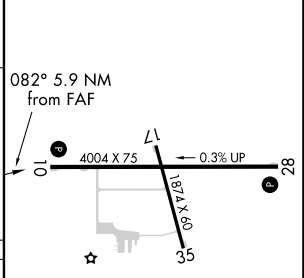


EC-1, 26 DEC 2024 to 23 JAN 2025

EC-1, 26 DEC 2024 to 23 JAN 2025



ELEV 640	TDZE 640
----------	----------



CATEGORY	A	B	C	D
S-10	1360-1	720 (800-1)	1360-2 720 (800-2)	NA
<b>C</b> CIRCLING	1360-1	720 (800-1)	1360-2 720 (800-2)	NA
CUTUP FIX MINIMUMS				
S-10	1100-1	460 (500-1)	1100-1½ 460 (500-1½)	NA
<b>C</b> CIRCLING	1140-1	500 (500-1)	1140-1½ 500 (500-1½)	NA

REIL Rwys 10 and 28 0  
MIRL Rwy 10-28 and 17-35 0

FAF to MAP 5.9 NM

Knots	60	90	120	150	180
Min:Sec	5:54	3:56	2:57	2:22	1:58