

WAAS CH 48805 W36A	APP CRS 001°	Rwy Idg 5501 TDZE 997 Apt Elev 1004
--	------------------------	--

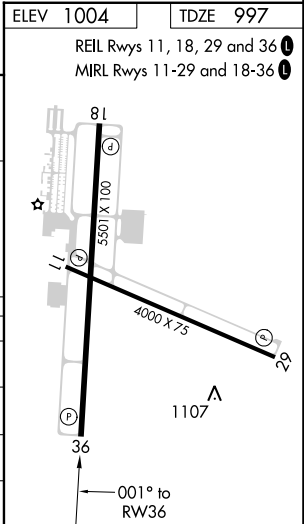
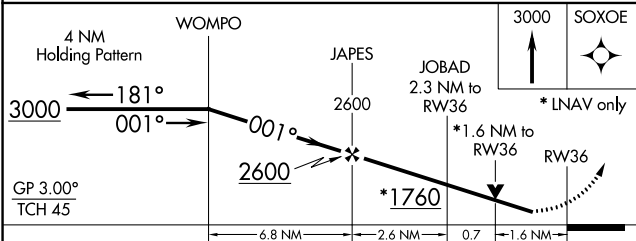
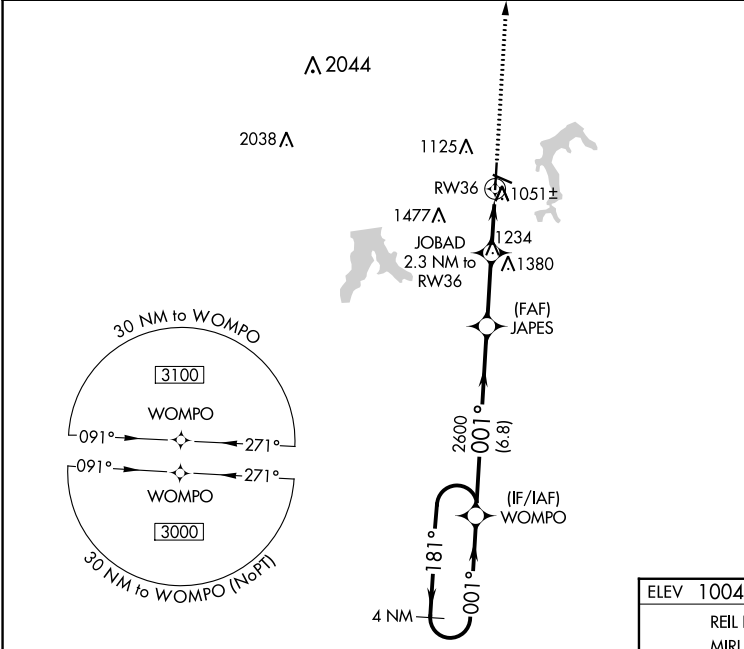
RNAV (GPS) RWY 36

LEE'S SUMMIT MUNI (LXT)

⚠ For uncompensated Baro-VNAV systems, LNAV/VNAV NA below -17°C (2°F) or above 54°C (130°F). Rwy 36 helicopter visibility reduction below 3/4 SM NA. DME/DME RNP-0.3 NA. VDP and Baro-VNAV NA when using Charles B. Wheeler Downtown altimeter setting. When local altimeter setting not received, use Charles B. Wheeler Downtown altimeter setting: increase LPV DA to 1374 feet and all visibilities 1/8 SM; increase LNAV/VNAV to 1367 feet and all visibilities 1/8 SM; increase all MDA 80 feet and LNAV visibility Cats C and D 1/8 SM, Circling Cats C and D 1/2 SM.

MISSED APPROACH: Climb to 3000 direct SOXOE and hold.

ASOS 124.175	KANSAS CITY APP CON 118.4 307.35	CLNC DEL 118.45	UNICOM 122.8 (CTAF) 0
------------------------	--	---------------------------	---------------------------------



CATEGORY	A	B	C	D
LPV DA	1306-7/8		309 (400-7/8)	
LNAV/VNAV DA	1299-7/8		302 (300-7/8)	
LNAV MDA	1540-1	543 (600-1)	1540-1 1/8	543 (600-1 1/8)
C CIRCLING	1540-1	536 (600-1)	1780-2 1/4 776 (800-2 1/4)	1780-2 1/2 776 (800-2 1/2)