

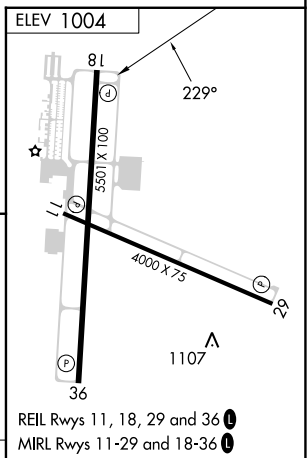
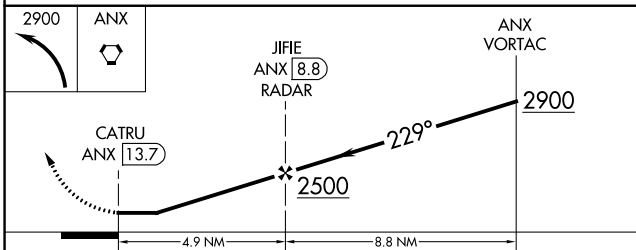
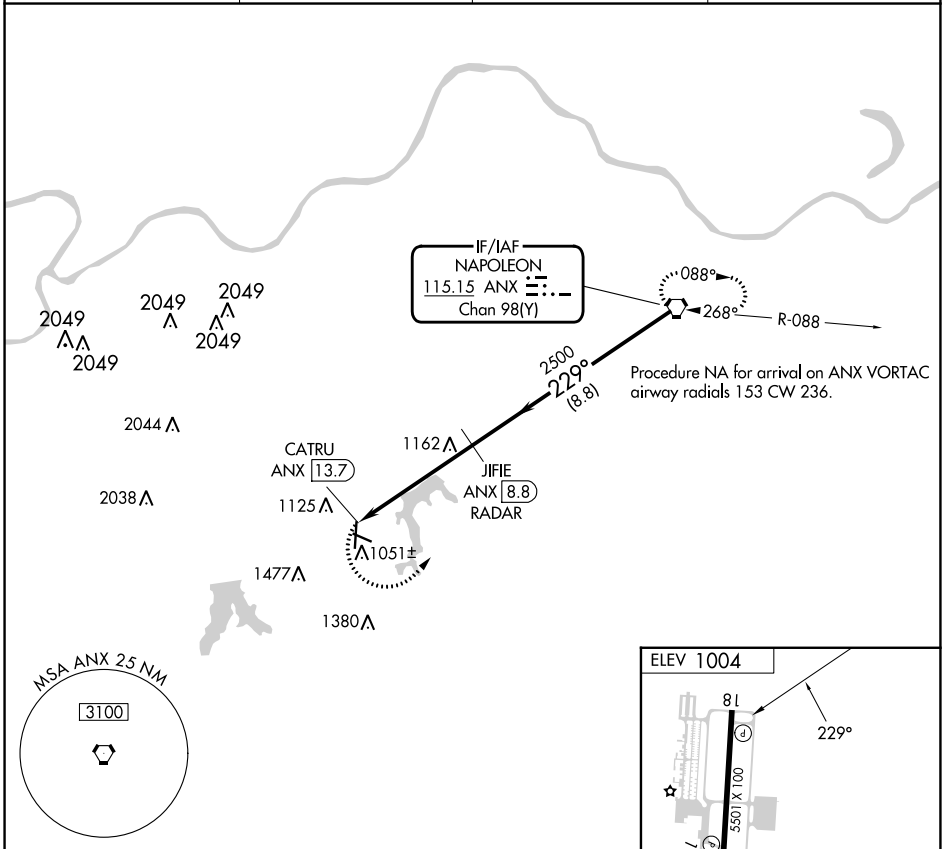
VORTAC ANX 115.15 Chan 98 (Y)	APP CRS 229°	Rwy Idg TDZE Apt Elev 1004	N/A N/A
---	------------------------	--	--------------------------

VOR-A
LEE'S SUMMIT MUNI (LX'T)

⚠ DME or RADAR required. When local altimeter setting not received, use Charles B. Wheeler Downtown altimeter setting and increase all MDA 80 feet, and Cat C and D visibility ¼ mile.

⚠ MISSED APPROACH: Climbing left turn to 2900 direct ANX VORTAC and hold.

ASOS 124.175	KANSAS CITY APP CON 118.4 307.35	CLNC DEL 118.45	UNICOM 122.8 (CTAF) 0
------------------------	--	---------------------------	--



	CATRU ANX [13.7]		JIFIE ANX [8.8] RADAR		ANX VORTAC	
	2500		229°		2900	
	4.9 NM		8.8 NM			
CATEGORY	A	B	C	D	FAF to MAP 4.9 NM	
C CIRCLING	1440-1 436 (500-1)	1540-1 536 (600-1)	1780-2¼ 776 (800-2¼)	1780-2½ 776 (800-2½)	Knots	60 90 120 150 180
					Min:Sec	4:54 3:16 2:27 1:58 1:38

NC-3, 26 DEC 2024 to 23 JAN 2025

NC-3, 26 DEC 2024 to 23 JAN 2025