

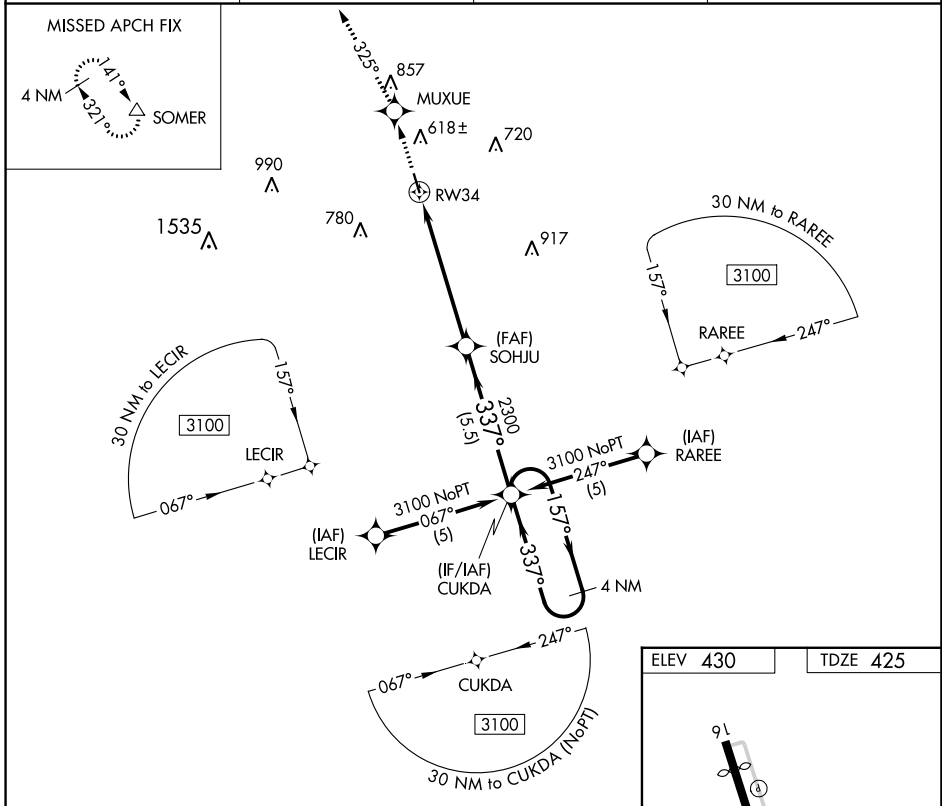
APP CRS	Rwy Idg	<b>4000</b>
<b>337°</b>	TDZE	<b>425</b>
	Apt Elev	<b>430</b>

# RNAV (GPS) RWY 34

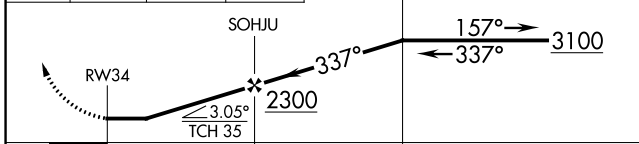
PLEASANTON MUNI (P/E/Z)

RNP APCH.	When local altimeter setting not received, use Kelly Fld altimeter setting and increase all MDA 100 feet. Procedure NA at night. Rwy 34 helicopter visibility reduction below 1 SM NA.	MISSED APPROACH: Climb to 3000 direct MUXUE and via 325° track to SOMER and hold.
-----------	--	---

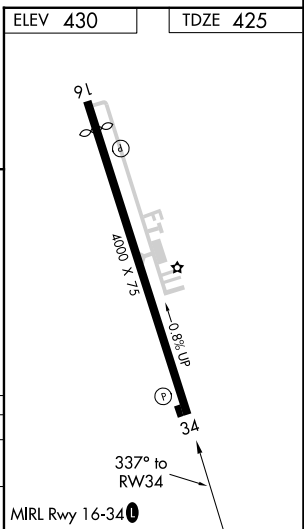
AWOS-3 <b>118.575</b>	SAN ANTONIO APP CON <b>118.05 353.5</b>	CLNC DEL <b>121.375</b>	UNICOM <b>122.7 (CTAF) 0</b>
--------------------------	--	----------------------------	---------------------------------



3000	MUXUE	325° tr	SOMER
------	-------	---------	-------



CATEGORY	A	B	C	D
LNVA MDA	960-1	535 (600-1)	NA	
CIRCLING	1020-1	590 (600-1)	NA	



SC-3, 26 DEC 2024 to 23 JAN 2025

SC-3, 26 DEC 2024 to 23 JAN 2025