

(TJANO1.TJANO) 24025

AL-6114 (FAA)

TJANO ONE DEPARTURE (RNAV)

PLEASANTON MUNI (PEZ)
PLEASANTON, TEXAS

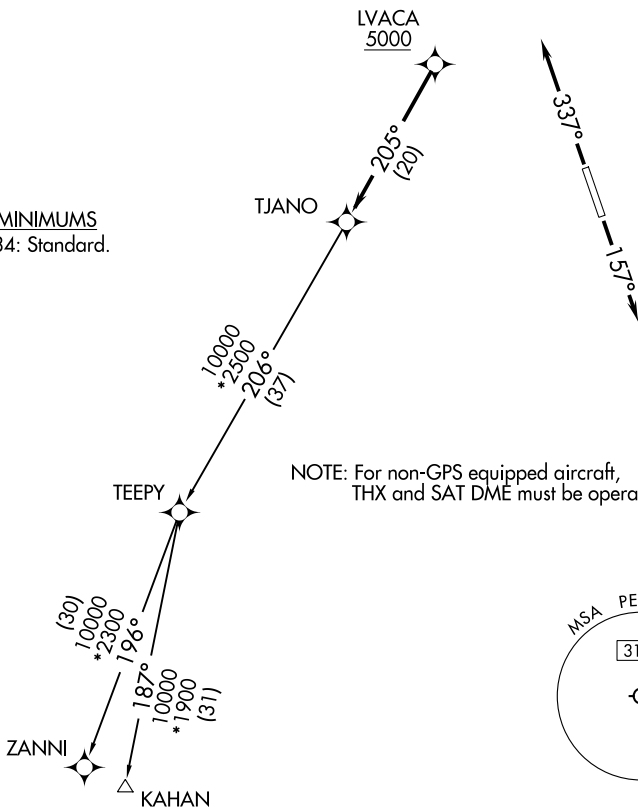
SAN ANTONIO DEP CON
125.7 290.225
CLNC DEL
121.375

RNAV 1 - DME/DME IRU or GPS.

RADAR required.

**TOP ALTITUDE:
ASSIGNED BY ATC**

TAKEOFF MINIMUMS
Rwys 16, 34: Standard.



Note: Chart not to scale.



DEPARTURE ROUTE DESCRIPTION

TAKEOFF RUNWAY 16: Climb on heading 157° or as assigned by ATC, for vectors to LVACA, thence

TAKEOFF RUNWAY 34: Climb on heading 337° or as assigned by ATC, for vectors to LVACA, thence

. . . . on track 205° to TJANO, then on Transition. Maintain ATC assigned altitude.

KAHAN TRANSITION (TJANO1.KAHAN)

ZANNI TRANSITION (TJANO1.ZANNI)

TJANO ONE DEPARTURE (RNAV)
(TJANO1.TJANO) 25JAN24

PLEASANTON, TEXAS
PLEASANTON MUNI (PEZ)

SC-3, 26 DEC 2024 to 23 JAN 2025

SC-3, 26 DEC 2024 to 23 JAN 2025