

WAAS Ch 42817 W23A	APP CRS 228°	Rwy Idg 5002 TDZE 1013 Apt Elev 1013
--	------------------------	---

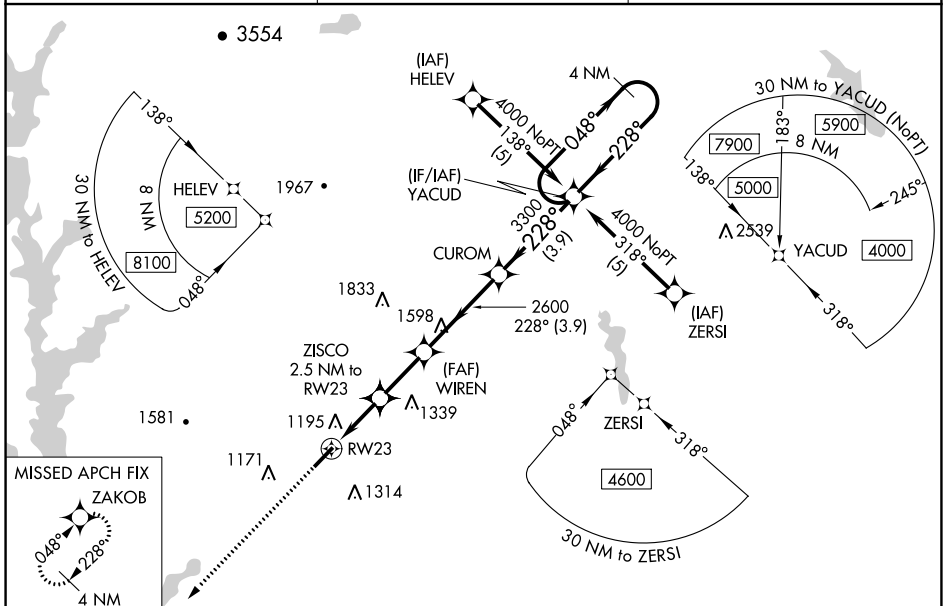
RNAV (GPS) RWY 23

PICKENS COUNTY (L,Q,K)

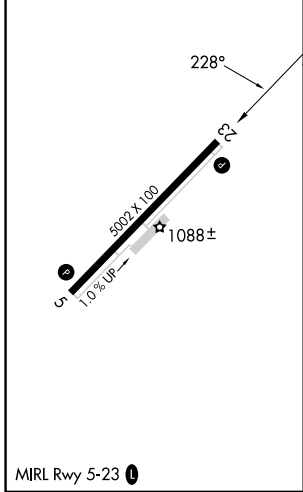
For uncompensated Baro-VNAV systems, LNAV/VNAV NA below -17°C (2°F) or above 46°C (114°F). DME/DME RNP-0.3 NA. When local altimeter setting not received, use Clemson altimeter setting and increase LPV DA to 1356 feet and visibility all Cats ¼ SM; increase LNAV/VNAV DA to 1594 feet; increase all MDAs 60 feet and LNAV Cat C and Circling Cat D visibility ½ SM, increase LNAV Cat D visibility ½ SM. Baro-VNAV NA when using Clemson altimeter setting. VDP NA with Clemson altimeter setting.

MISSED APPROACH: Climb to 3000 direct ZAKOB and hold.

AWOS-3 120.0	GREER APP CON * 118.8 270.275	UNICOM 122.8 (CTAF) 0
------------------------	---	---------------------------------



ELEV 1013	TDZE 1013
-----------	-----------



3000 ZAKOB	VGSI and RNAV glidepath not coincident (VGSI Angle 3.00/TCH 26).			4 NM Holding Pattern
*LNAV only.	ZISCO 2.5 NM to RW23	WIREN 2600	CUROM	YACUD 4000
1.5 NM to RW23	1.5 NM to RW23	2.3 NM	3.9 NM	3.9 NM
1860*	2600	3300	228°	048°
GP 3.00° TCH 45				
CATEGORY	A	B	C	D
LPV DA	1310-1		297 (300-1)	
LNAV/VNAV DA	1548-2		535 (600-2)	
LNAV MDA	1500-1	487 (500-1)	1500-1½ 487 (500-1½)	1500-1½ 487 (500-1½)
CIRCLING	1560-1 547 (600-1)	1620-1 607 (700-1)	1620-1¾ 607 (700-1¾)	1780-2½ 767 (800-2½)

SE-2, 26 DEC 2024 to 23 JAN 2025

SE-2, 26 DEC 2024 to 23 JAN 2025