

| | | |
|--|------------------------|--|
| WAAS CH 99517 W05A | APP CRS 048° | Rwy Idg 5002 TDZE 996 Apt Elev 1013 |
|--|------------------------|--|

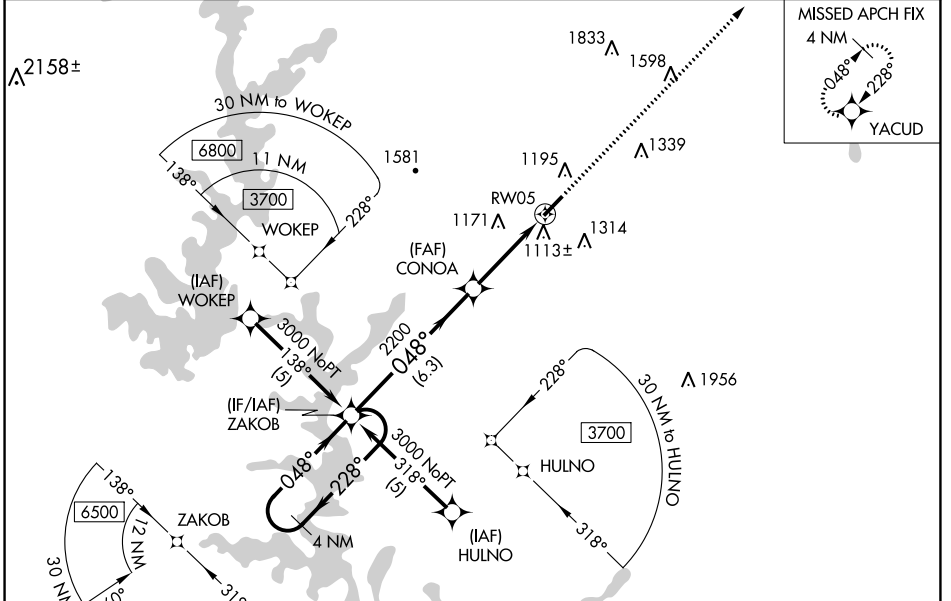
RNAV (GPS) RWY 5

PICKENS COUNTY (L,Q,K)

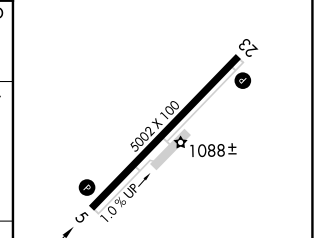
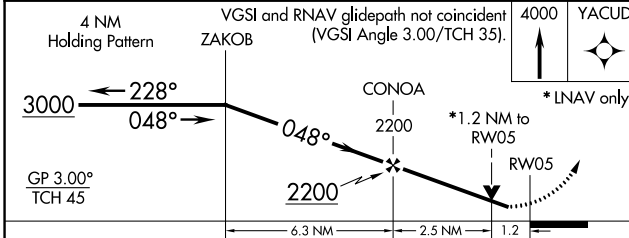
▽ For uncompensated Baro-VNAV systems, LNAV/VNAV NA below -17°C (2°F) or above 46°C (114°F). DME/DME RNP-0.3 NA. Visibility reduction by helicopters NA. When local altimeter setting not received, use Clemson altimeter setting and increase LPV DA to 1292 feet and visibility all Cats ¼ SM; increase LNAV/VNAV DA to 1487 feet; increase all MDAs 60 feet and LNAV Cat C and Circling Cat D visibility ¼ SM, and LNAV Cat D visibility ½ SM. Baro-VNAV NA when using Clemson altimeter setting. VDP NA with Clemson altimeter setting.

▲ NA MISSED APPROACH: Climb to 4000 direct YACUD and hold.

| | | |
|------------------------|---|---------------------------------|
| AWOS-3 120.0 | GREER APP CON ★ 118.8 270.275 | UNICOM 122.8 (CTAF) 0 |
|------------------------|---|---------------------------------|



| | |
|-----------|----------|
| ELEV 1013 | TDZE 996 |
|-----------|----------|



| CATEGORY | A | B | C | D |
|--------------|-----------------------|-----------------------|-------------------------|-------------------------|
| LPV DA | 1246-1 250 (300-1) | | | |
| LNAV/VNAV DA | 1441-1¾ 445 (500-1¾) | | | |
| LNAV MDA | 1380-1 | 384 (400-1) | 1380-1½ 384 (400-1½) | 1380-1¼ 384 (400-1¼) |
| CIRCLING | 1560-1 547 (600-1) | 1620-1 607 (700-1) | 1620-1¾ 607 (700-1¾) | 1780-2½ 767 (800-2½) |

MIRL Rwy 5-23 0

SE-2, 26 DEC 2024 to 23 JAN 2025

SE-2, 26 DEC 2024 to 23 JAN 2025