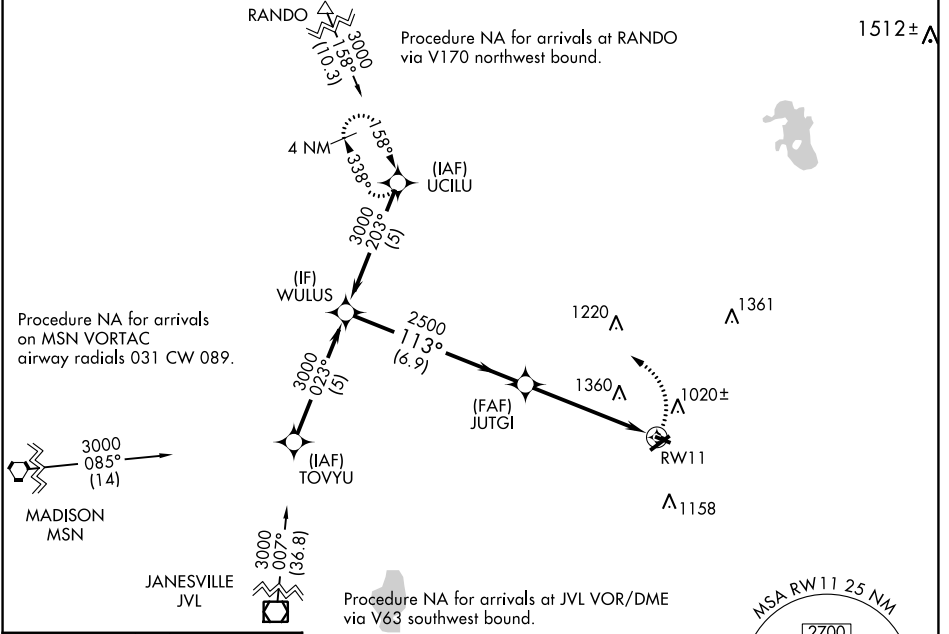


APP CRS 113°	Rwy Idg 2801
	TDZE 833
	Apt Elev 833

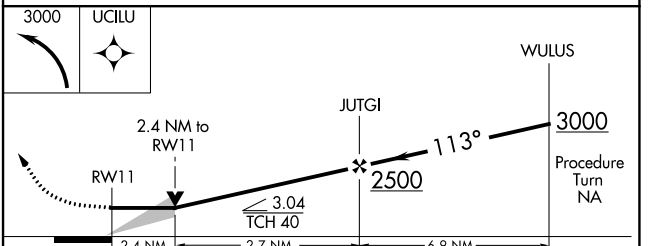
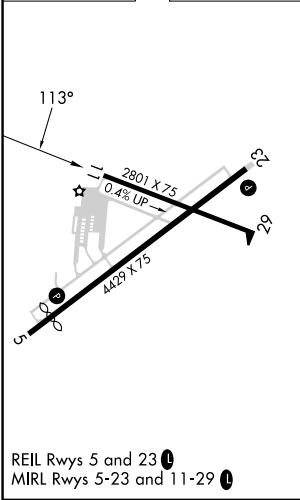
RNAV (GPS) RWY 11

WATERTOWN MUNI (RYV)

RNP APCH.		MISSED APPROACH: Climbing left turn to 3000 direct UCILU and hold.
<p>▼ When local altimeter setting not received, use Dodge County altimeter setting and increase all MDAs 60 feet and Circling visibility Cat A ¼ SM. VDP NA when using Dodge County altimeter setting. Circling Rwy 23 NA at night.</p>		
AWOS-3 119.975	MADISON APP CON * 119.15 343.7	UNICOM 122.8 (CTAF) 0



ELEV 833 **D** TDZE 833



	A	B	C	D
CATEGORY	A	B	C	D
LNAV MDA	1640-1 807 (900-1)	1640-1¼ 807 (900-1¼)	1640-2½	807 (900-2½)
CIRCLING	1640-1 807 (900-1)	1640-1¼ 807 (900-1¼)	1720-2¾ 887 (900-2¾)	1720-3 887 (900-3)

EC-3, 26 DEC 2024 to 23 JAN 2025

EC-3, 26 DEC 2024 to 23 JAN 2025