

APP CRS	Rwy Idg	3515
271°	TDZE	737
	Apt Elev	737

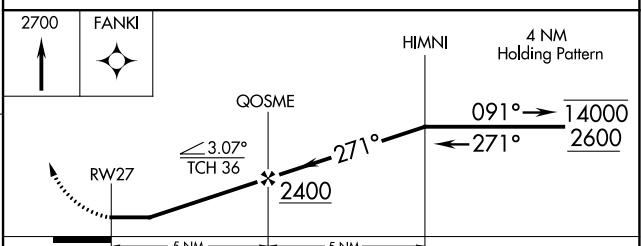
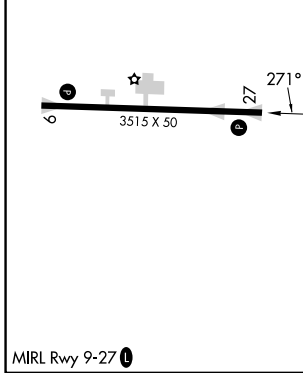
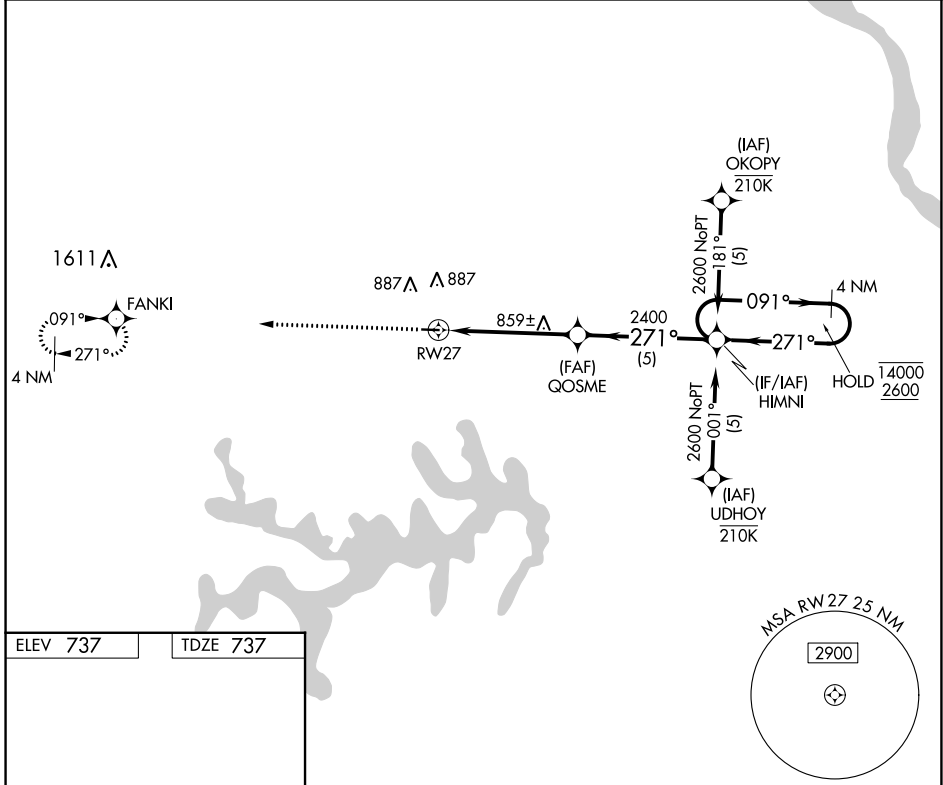
RNAV (GPS) RWY 27

CPT BEN SMITH AIRFIELD/MONROE CITY (K52)

RNP APCH - GPS.
 Procedure NA at night. Rwy 27 helicopter visibility reduction below 1 SM NA. Use Quincy, IL altimeter setting.

MISSED APPROACH: Climb to 2700 direct FANKI and hold.

UIN ASOS 121.425	KANSAS CITY CENTER 126.225 317.775	UNICOM 122.8 (CTAF) 0
----------------------------	----------------------------------------------	---------------------------------



CATEGORY	A	B	C	D
LNAV MDA	1240-1	503 (600-1)	1240-1 ⁵ / ₈ 503 (600-1 ⁵ / ₈)	NA
C CIRCLING	1380-1	643 (700-1)	1380-1 ³ / ₄ 643 (700-1 ³ / ₄)	NA

NC-3, 26 DEC 2024 to 23 JAN 2025

NC-3, 26 DEC 2024 to 23 JAN 2025