

APP CRS	Rwy Idg	4000
003°	TDZE	715
	Apt Elev	715

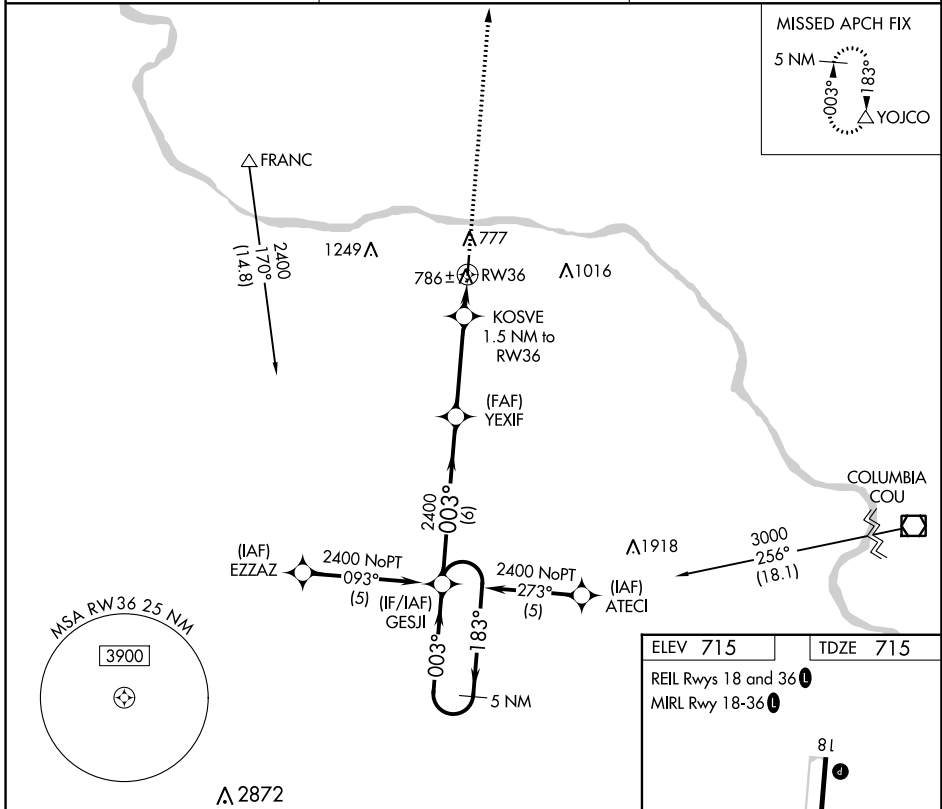
RNAV (GPS) RWY 36

JESSE VIERTEL MEML (V.E.R.)

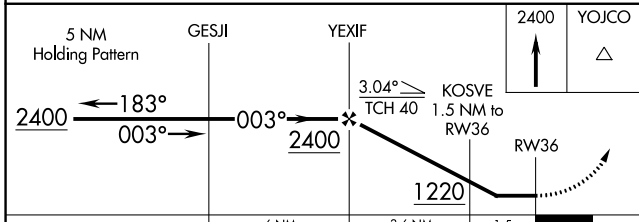
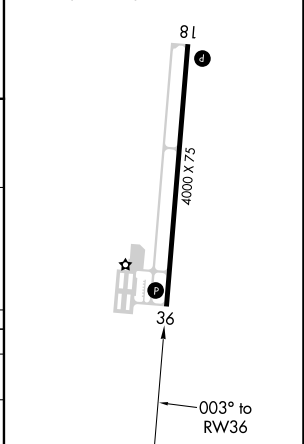
RNP APCH. MISSED APPROACH: Climb to 2400 direct YOJCO and hold.

Straight-in Rwy 36 NA at night. Circling Rwy 36 NA at night. Rwy 36 helicopter visibility reduction below 1 SM NA. Use Columbia Rgnl altimeter setting.

AWOS-3PT 119.625	MIZU APP CON 124.375	UNICOM 122.7 (CTAF) ①
----------------------------	--------------------------------	---------------------------------



ELEV 715	TDZE 715
REIL Rwy 18 and 36 ①	
MIRL Rwy 18-36 ①	



CATEGORY	A	B	C	D
RNAV MDA	1120-1	405 (500-1)	1120-1¼ 405 (500-1¼)	NA
CIRCLING	1260-1 545 (600-1)	1340-1 625 (700-1)	1420-2 705 (800-2)	NA

NC-3, 26 DEC 2024 to 23 JAN 2025

NC-3, 26 DEC 2024 to 23 JAN 2025