

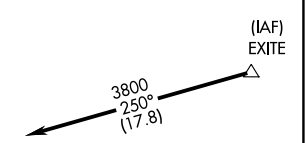
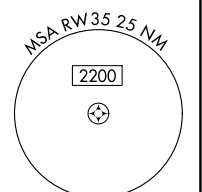
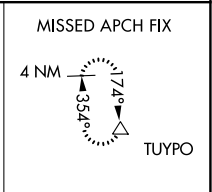
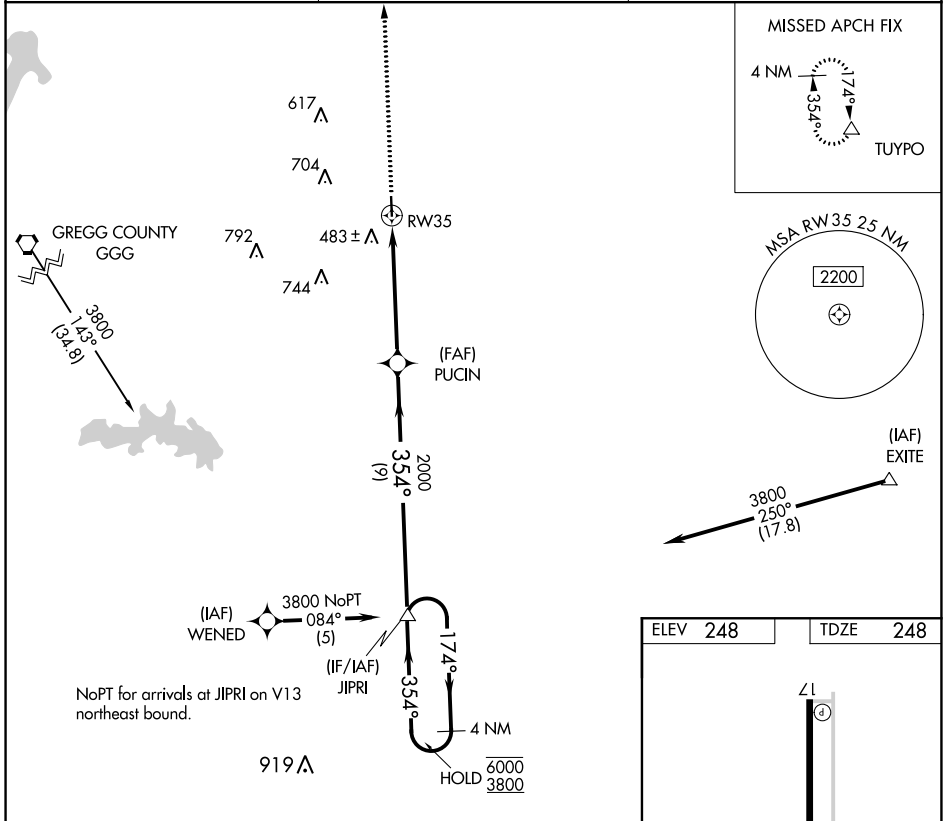
APP CRS	Rwy Idg	<b>4000</b>
<b>354°</b>	TDZE	<b>248</b>
	Apt Elev	<b>248</b>

# RNAV (GPS) RWY 35

PANOLA COUNTY-SHARPE FLD (4F2)

RNP APCH-GPS.	MISSED APPROACH: Climb to 2000 direct TUYPO and hold.
<p><b>⚠</b> Rwy 35 helicopter visibility reduction below 3/4 SM NA. When local altimeter setting not received, use Longview altimeter setting.</p>	

AWOS-3PT <b>121.125</b>	SHREVEPORT APP CON * <b>119.9 335.55</b>	UNICOM <b>122.8 (CTAF) 0</b>
----------------------------	---	---------------------------------

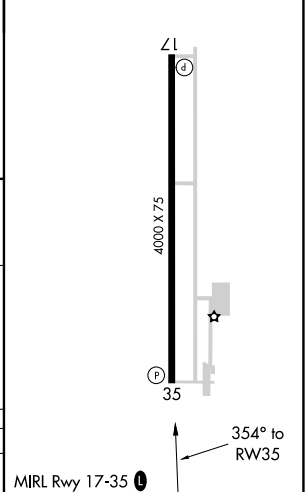
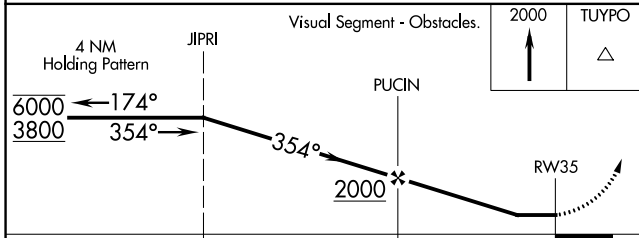


NoPT for arrivals at JIPRI on V13 northeast bound.

(IAF) WENED 3800 NoPT 084° (5)

(IF/IAF) JIPRI 174° 354°

ELEV 248	TDZE 248
----------	----------



CATEGORY	A	B	C	D
LNAV MDA	840-1	592 (600-1)	840-1½ 592 (600-1½)	NA

SC-2, 26 DEC 2024 to 23 JAN 2025

SC-2, 26 DEC 2024 to 23 JAN 2025