

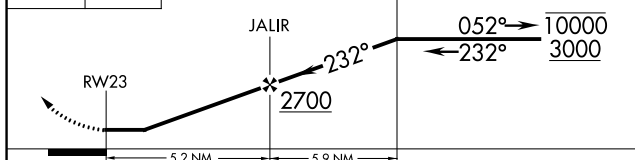
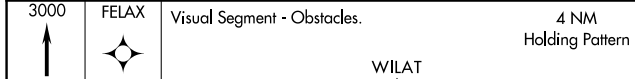
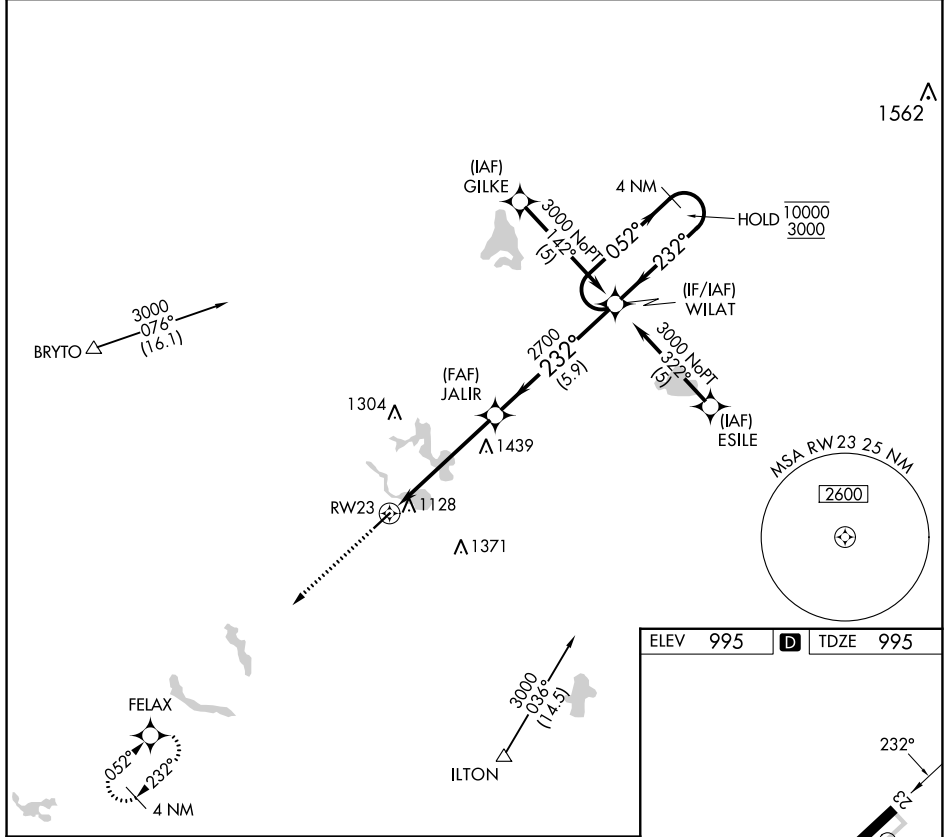
APP CRS	Rwy Idg	<b>4000</b>
<b>232°</b>	TDZE	<b>995</b>
	Apt Elev	<b>995</b>

# RNAV (GPS) RWY 23

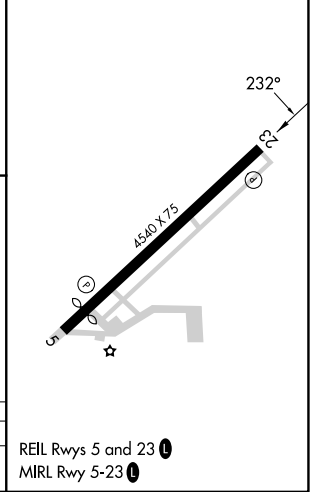
TRI-STATE STEUBEN COUNTY (A.N.Q)

RNP APCH.	<p>MISSED APPROACH: Climb to 3000 direct FELAX and hold.</p>
<p><b>▼</b> Rwy 23 helicopter visibility reduction below 1 SM NA. Procedure NA at night.</p>	

AWOS-3 <b>118.175</b>	FORT WAYNE APP CON <b>127.2 284.6</b> (SW/NW) <b>132.15 284.6</b> (SE/NE)	UNICOM <b>123.075</b> (CTAF) <b>①</b>
--------------------------	---	--



ELEV	995	<b>D</b>	TDZE	995
------	-----	----------	------	-----



CATEGORY	A	B	C	D
LNAV MDA	1700-1	705 (800-1)	1700-2	NA
			705 (800-2)	

REIL Rwy 5 and 23 **①**  
MIRL Rwy 5-23 **①**