

VOR/DME MCW <b>114.9</b> Chan <b>96</b>	APP CRS <b>343°</b>	Rwy Idg <b>4020</b> TDZE <b>1168</b> Apt Elev <b>1176</b>
---	------------------------	---

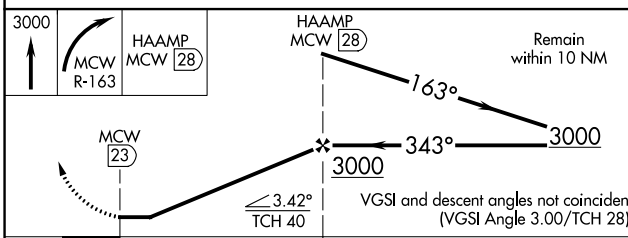
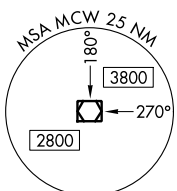
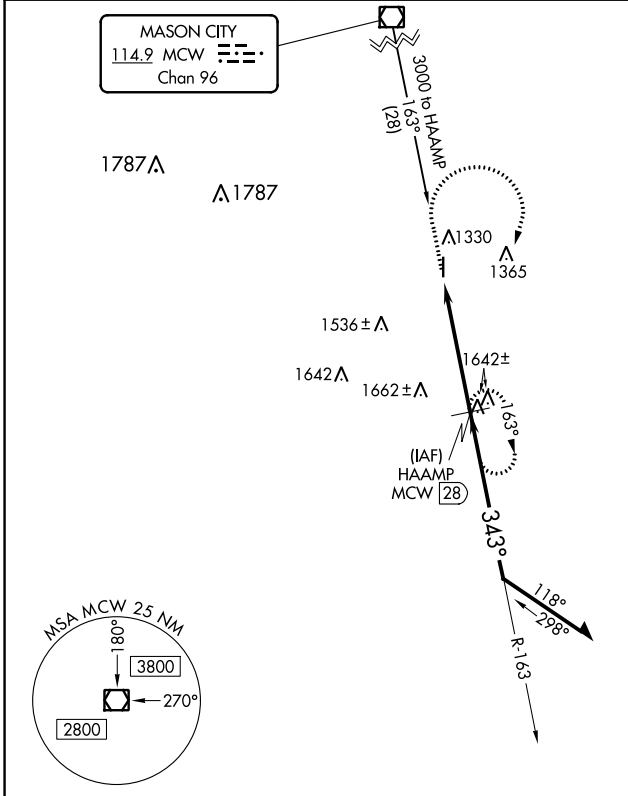
# VOR/DME RWY 35

HAMPTON MUNI (HPT)

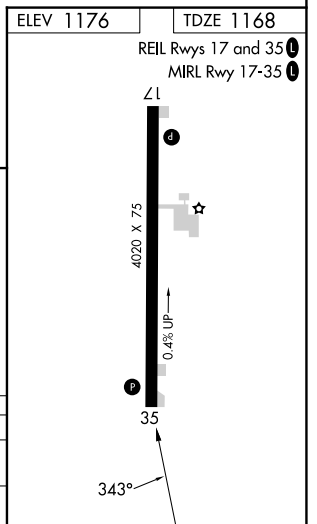
**⚠** Rwy 35 helicopter visibility reduction below ¼ SM NA.  
**⚠** NA When local altimeter setting not received, use Mason City altimeter setting.

MISSED APPROACH: Climb to 3000 then right turn via MCW R-163 to HAAMP/28 DME and hold.

AWOS-3 <b>121.025</b>	MINNEAPOLIS CENTER <b>134.0 288.3</b>	UNICOM <b>122.7 (CTAF)</b>
--------------------------	--	-------------------------------



CATEGORY	A	B	C	D
S-35	1980-1 812 (900-1)	1980-1¼ 812 (900-1¼)		NA
<b>C</b> CIRCLING	1980-1 804 (900-1)	1980-1¼ 804 (900-1¼)		NA



NC-3, 26 DEC 2024 to 23 JAN 2025

NC-3, 26 DEC 2024 to 23 JAN 2025