

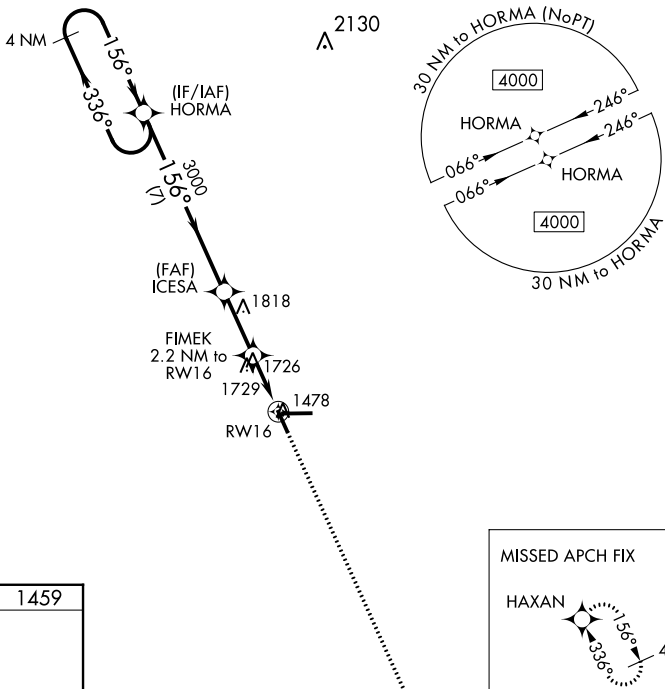
WAAS CH 86231	APP CRS 156°	Rwy Idg TDZE 1459	4435
W16A		Apt Elev 1478	

RNAV (GPS) RWY 16

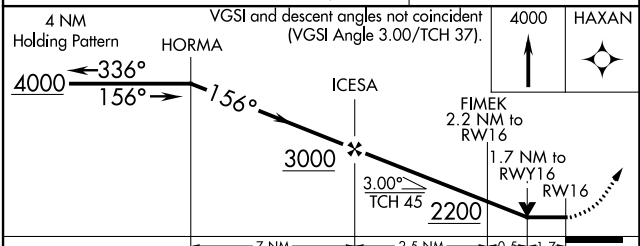
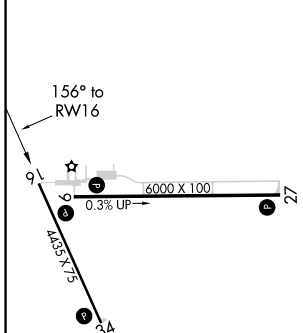
TAYLOR COUNTY (MDZ)

RNP APCH.	When local altimeter setting not received, use Merrill altimeter setting and increase all MDA 100 feet and increase all Cat C/D visibility ¼ mile. Rwy 16 helicopter visibility reduction below ¼ SM NA. VDP NA when using Merrill altimeter setting.	MISSED APPROACH: Climb to 4000 direct HAXAN and hold.
-----------	---	--

AWOS-3 119.025	MINNEAPOLIS CENTER 124.4 317.7	UNICOM 122.8 (CTAF)
--------------------------	--	-------------------------------



ELEV 1478	TDZE 1459
------------------	------------------



CATEGORY	A	B	C	D
LP MDA	2040-1	581 (600-1)	2040-1¾	581 (600-1¾)
LNAV MDA	2060-1	601 (600-1)	2060-1¾	601 (600-1¾)
CIRCLING	2060-1	582 (600-1)	2060-1¾	2180-2¼ 702 (800-2¼)

EC-3, 26 DEC 2024 to 23 JAN 2025

EC-3, 26 DEC 2024 to 23 JAN 2025