

WAAS CH <b>63210</b> <b>W05A</b>	APP CRS <b>050°</b>	Rwy Idg <b>4351</b> TDZE <b>74</b> Apt Elev <b>74</b>
----------------------------------------	------------------------	-------------------------------------------------------------

# RNAV (GPS) RWY 5

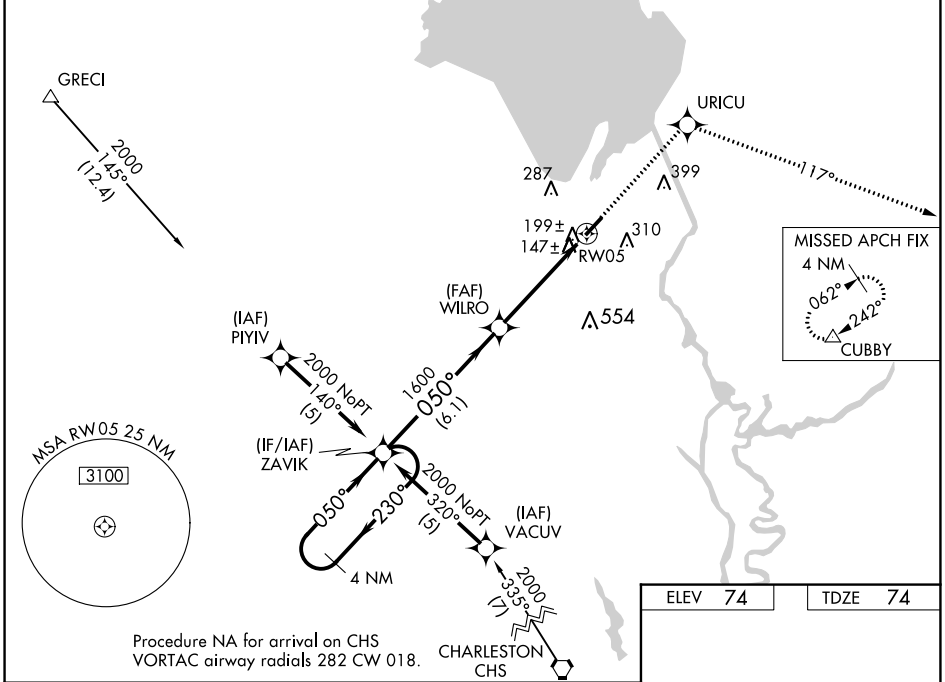
BERKELEY COUNTY (MKS)

RNP APCH-GPS.

**NA** Circling to Rwy 23 NA at night. Baro-VNAV NA when using Charleston AFB/Intl altimeter setting. For uncompensated Baro-VNAV systems, LNAV/VNAV NA below -15° C or above 54° C. Visibility reduction by helicopters NA. When local altimeter setting not received, use Charleston AFB/Intl altimeter setting: increase LPV DA to 451 feet; LNAV/VNAV DA to 513 feet; increase all MDA 60 feet and increase LNAV Cat C and Circling Cat C/D visibility ¼ SM. VDP NA when using Charleston AFB/Intl altimeter setting.

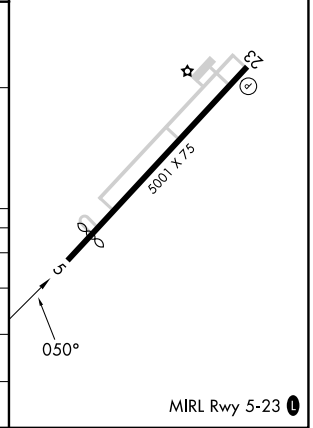
**MISSED APPROACH:** Climb to 2000 direct URICU and via 117° track to CUBBY and hold.

AWOS-3 <b>119.175</b>	CHARLESTON APP CON <b>121.275 379.925</b>	UNICOM <b>123.05 (CTAF) 0</b>
--------------------------	----------------------------------------------	----------------------------------



ELEV 74	TDZE 74
---------	---------

4 NM Holding Pattern	ZAVIK	2000	URICU	CUBBY
		↑	117° TRK	△
GP 3.00° TCH 46	← 230° / 050° →	1600	*1.3 NM to RW05	*LNAV only
	← 050° →	1600	← 3.3 NM →	← 1.3 NM →
		← 6.1 NM →		
CATEGORY	A	B	C	D
LPV DA		407-1¼	333 (400-1¼)	
LNAV/VNAV DA		469-1½	395 (400-1½)	
LNAV MDA	520-1	446 (500-1)	520-1¼ 446 (500-1¼)	520-1½ 446 (500-1½)
CIRCLING	580-1 506 (600-1)	620-1 546 (600-1)	700-1¾ 626 (700-1¾)	860-2½ 786 (800-2½)



MIRL Rwy 5-23 0

SE-2, 26 DEC 2024 to 23 JAN 2025

SE-2, 26 DEC 2024 to 23 JAN 2025